

KSuse
Sender

v 2.14.1

Content

System requirements	4
Description of the program interface	5
Gallery	5
General settings	8
“Main” tab	8
“Web” tab	10
“Paths” tab	12
“Digital” tab	13
Sending	14
“Email settings” tab	14
“Templates” tab	15
“Additional Settings” tab	16
“Additional Attachments” tab	17
Database window	18
“SMS settings” window	20
“WhatsApp settings” window	22
Printer settings	24
Presets Settings	26
“Settings” tab	26
Block “Integration”	26
Block “Hot folders”	26
Block “Instagram*”	27
“VK” tab	28
“Publishing Files” tab	30
“QR codes in Galleries” tab	31
“Gallery QR Code on Pages” tab	31
“File QR Code on Pages” tab	32
“WiFi Settings” tab	32
“WiFi QR Code on Pages” tab	33
«Data collection» tab	34
“INTERNET-GALLERY” tab	36
“DROPBOX” tab	38
«GOOGLE DRIVE» tab	40
«YANDEX DISK» tab	43

"Web Pages Branding" tab	44
«Web gallery» tab	44
«Last» tab	46
«Carousel» tab	47
«Digital» tab.....	48
"Print Branding" tab.....	49
"ChromaKey" tab.....	51
Second screen	52
Browser.....	53
Web API.....	54
Used libraries.....	58

Use only English letters, numbers, point, hyphens, underscores in the names of paths, folders, files!

System requirements

Compatibility: Windows 10-11 x64.

Required software:

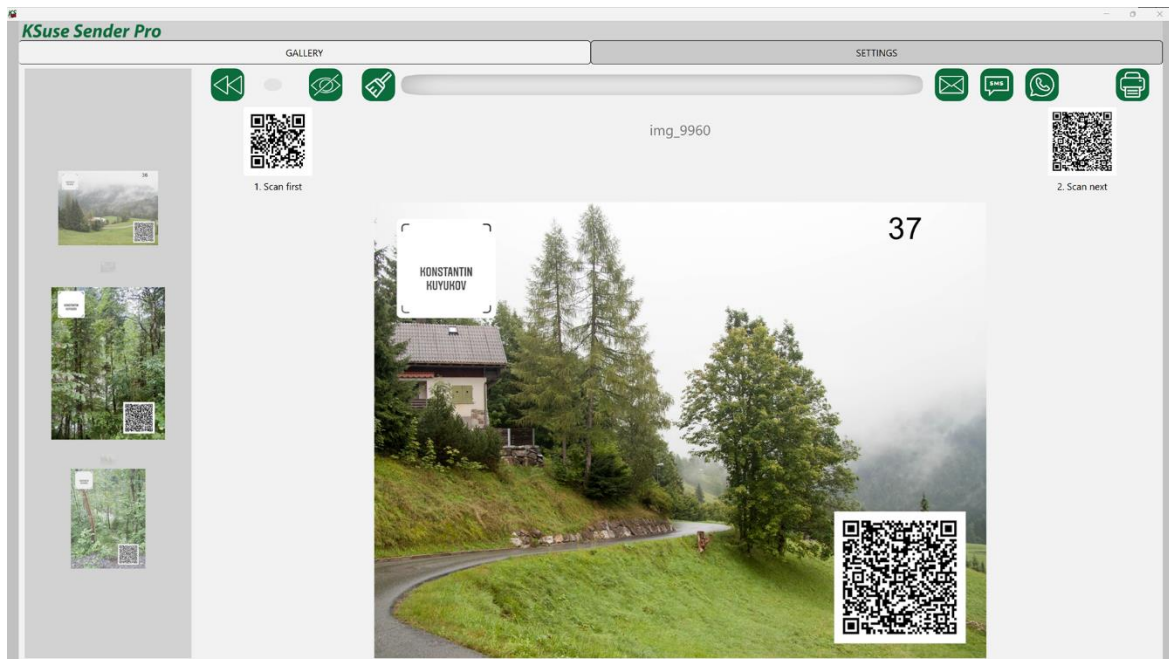
1. .NET 6.0 Desktop Runtime - Windows x64
<https://dotnet.microsoft.com/en-us/download/dotnet/thank-you/runtime-desktop-6.0.13-windows-x64-installer>
2. Microsoft Visual C ++ 2019 redistributable component (both x86 and x64 versions).
https://aka.ms/vs/17/release/vc_redist.x86.exe
https://aka.ms/vs/17/release/vc_redist.x64.exe

Recommended software:

1. Codecs. K-Lite Codec Pack Mega recommended.
https://codecguide.com/download_kl.htm

Description of the program interface

Gallery



Photos and videos are added to the gallery immediately after the files appear in the monitored folders.

When you click on the image in the upper slider, it opens the corresponding video in the viewing block.

An email address is entered in the field (focus is always on it, there is no need to place the cursor in the field for keyboard input).

A button with a broom icon is used to clear the field with the mail address.

Only files created or modified in the last 12 hours (by default) are displayed in the gallery!



- enable / disable automatic rewind to the last photo




- open the last photo



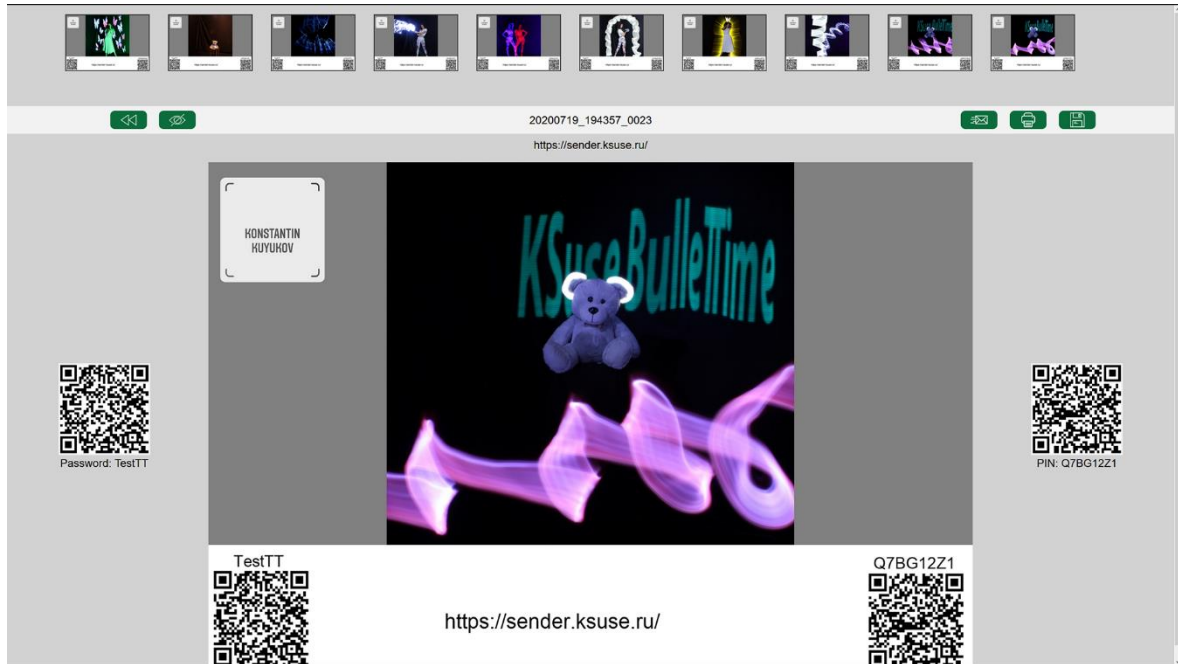
- clear address

Ctrl + D - delete the video. The video is hidden from the gallery and all web pages. Emails with this video cannot be sent.

Ctrl + H or  - hide the video. The video is hidden from the gallery and all web pages. Emails with this video can be sent.

Attention! The program does not control the printer settings. It sends the photo to print to the printer set in Windows by the default printer, stretching the image to the paper size set in the printer properties. Printing is possible only if there is an active preset.

The web version of the gallery is also available.



On any device connected to the same network as the computer with the Ksuse Sender software, you must open any browser and enter the IP address of the computer with the Ksuse Sender software in the address bar.

The web gallery and carousel addresses are displayed in the “Settings – Main settings”.

For the web gallery to work correctly, you must allow access via the TCP protocol for port 80 in the firewall, or disable the firewall. It is also necessary to turn off any other programs that may use port 80 before starting Ksuse Sender.

General settings

Basic settings: https://www.youtube.com/watch?v=mkbSh_n8quk

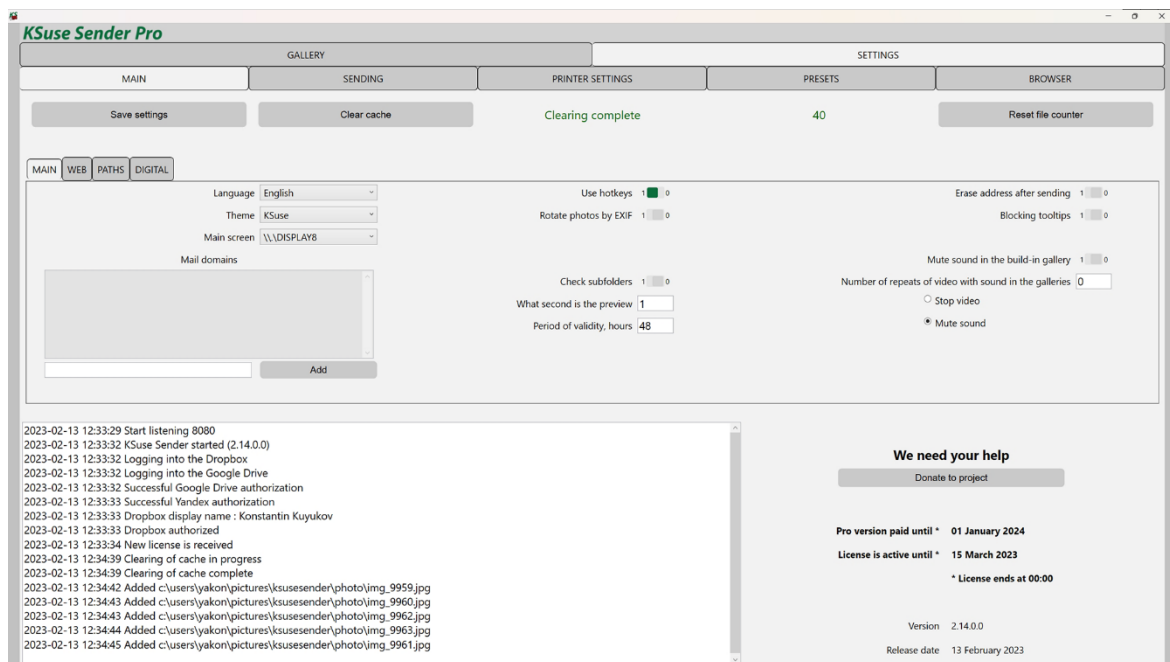
Be sure to click "Save Settings" when changing values in this window before switching to another window!

"Clear Cache" - Erases all files in the gallery. It is used when it is necessary to remove previously processed files from the gallery or re-generate previews and branding when changing preset settings.

"Reset file counter" - Resets the file counter.

Adding each new file in the gallery increases the counter, including when previously processed files are added again after clearing the cache.

"Main" tab



"Language" - Select the interface language.

"Theme" - Select the color palette of the interface.

In the "What second is the preview" option the number of second of the frame is entered from which it is used as a preview.

"Main screen" - allows you to move the program window to another monitor.

You can further limit the files displayed in the gallery by setting the number of hours from the current date to the date of creation or modification of the file (the maximum value of them). This quantity can be changed in the field "Period of validity, hours". The default value is 12. Videos older than the specified number of hours will not be displayed in galleries.

"Erase the address after sending" - automatic cleaning of the field with the address immediately after sending.

"Blocking tooltips" - disable autocomplete.

"At what second preview" - indicates from what second to take a frame from the video as a preview.

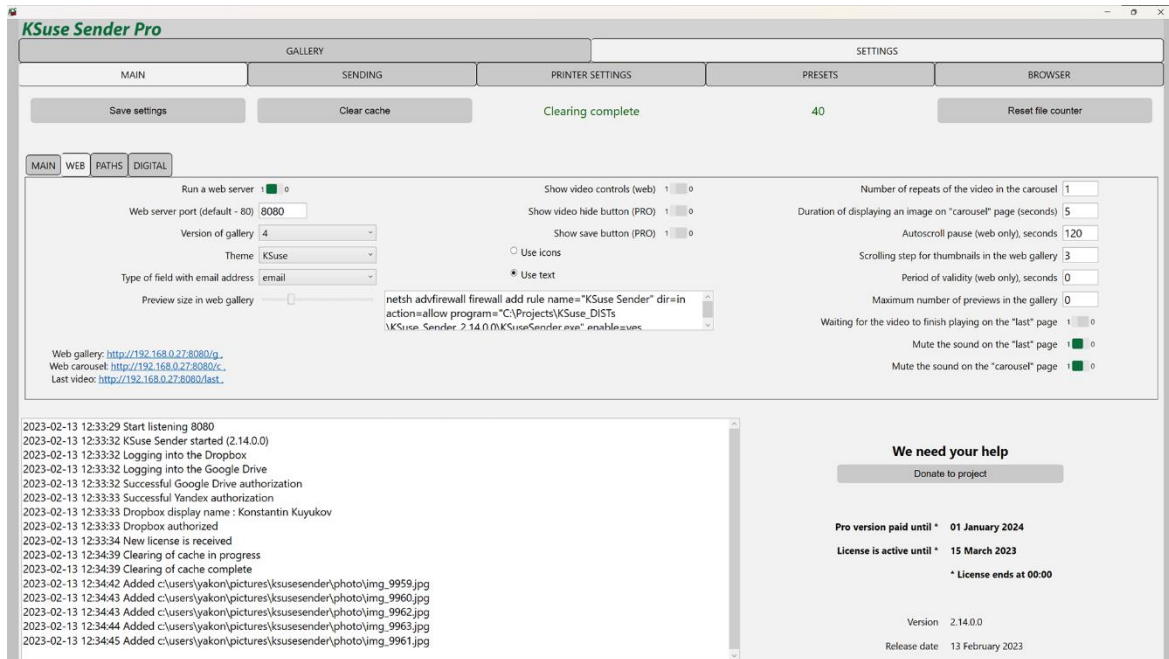
The specified domains are displayed as buttons after entering the @ symbol in the recipient address field.

To remove a domain from the list, select it and press the Delete key.

"Mute sound in the build-in gallery" - Mute / unmute the sound in the built-in gallery.

"Number of repeats of video with sound in the web gallery" - After selecting the video, the specified number of times is played, then either the playback is stopped or the sound is turned off. 0 - sound off, -1 - unlimited.

“Web” tab



Attention! Any changes to the web pages settings are only applied when the web page is refreshed!

In this window, you can see the links that open the web gallery and web carousel.

"Period of validity (web), seconds" - Videos older than the specified number of seconds will not be displayed on web pages. A value of 0 disables automatic hiding.

“Version of gallery” - choice of web gallery layout option.

For the field types “email” and “text”, a different virtual keyboard is displayed. Validation for compliance with the format is used for the field with the type “email”, but there is no autocomplete on iOS devices.

“Rotate Photos by EXIF” automatically rotates the photos. It is recommended that you turn it off to avoid memory leaks in the web gallery if you are not using photos taken directly from the camera.

"Show video controls (web)" - displaying controls on the pages "last video" and "carousel".

The number of thumbnails in a slider on a web page depends on the screen resolution of the device and the width of the thumbnails. Thus, it is not known in advance how many of them will be displayed in the slider. With the help of the "Scrolling step of the preview in the web gallery" field, it is possible to set the most suitable value for the slider shift when you press the scroll buttons. Also, this parameter affects the loading of the preview in the slider. It is recommended to set it equal to the number of previews on the device used for the web gallery.

A small window displays a command to add permission in the Windows firewall for incoming connections to Sender. The command must be run from a command prompt running as administrator.

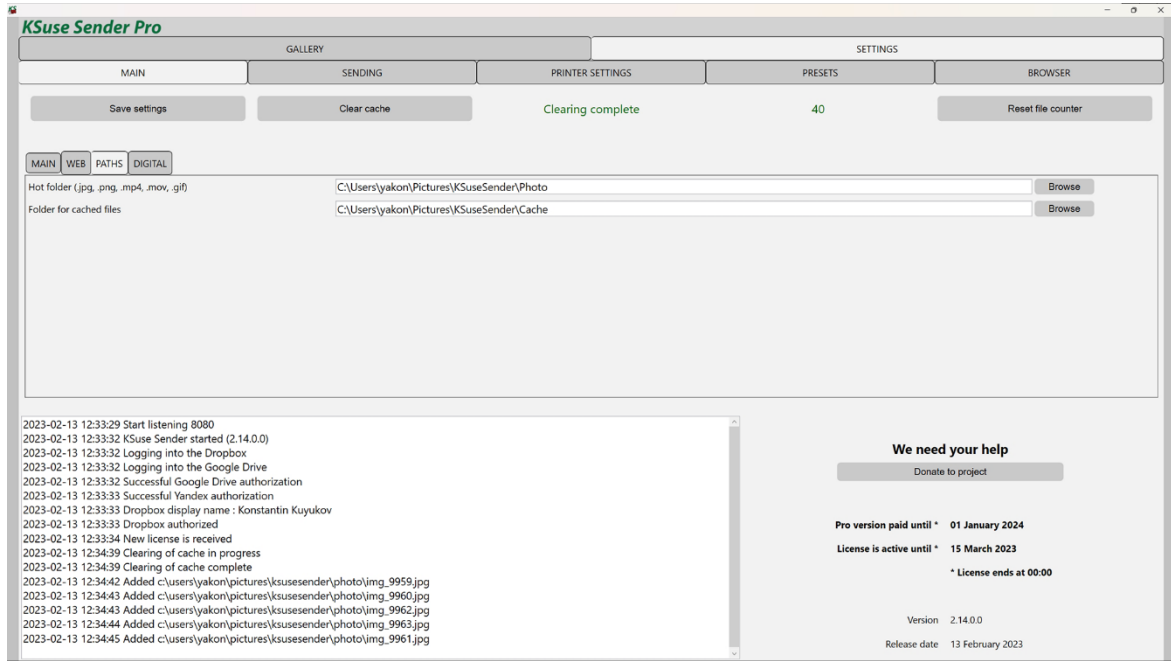
The "Autoscroll pause (only for web), seconds" field sets the duration of waiting for user actions in the browser. Upon expiration of this interval, when a new file arrives in the gallery, an automatic transition to it will be made.

Using the "Maximum number of previews in gallery" option, you can limit the number of previews displayed in the web gallery. 0 - the number is not limited.

If the option "Waiting for the video to finish playing on the "last" page" is enabled, then when a new video arrives, the previous video on this page is not interrupted, but played to the end and only then replaced.

Attention! If the page has sound turned on by default, then in many browsers the autoplay of the video when the page is opened does not work. In this case, you must enable the display of video controls and start the video manually.

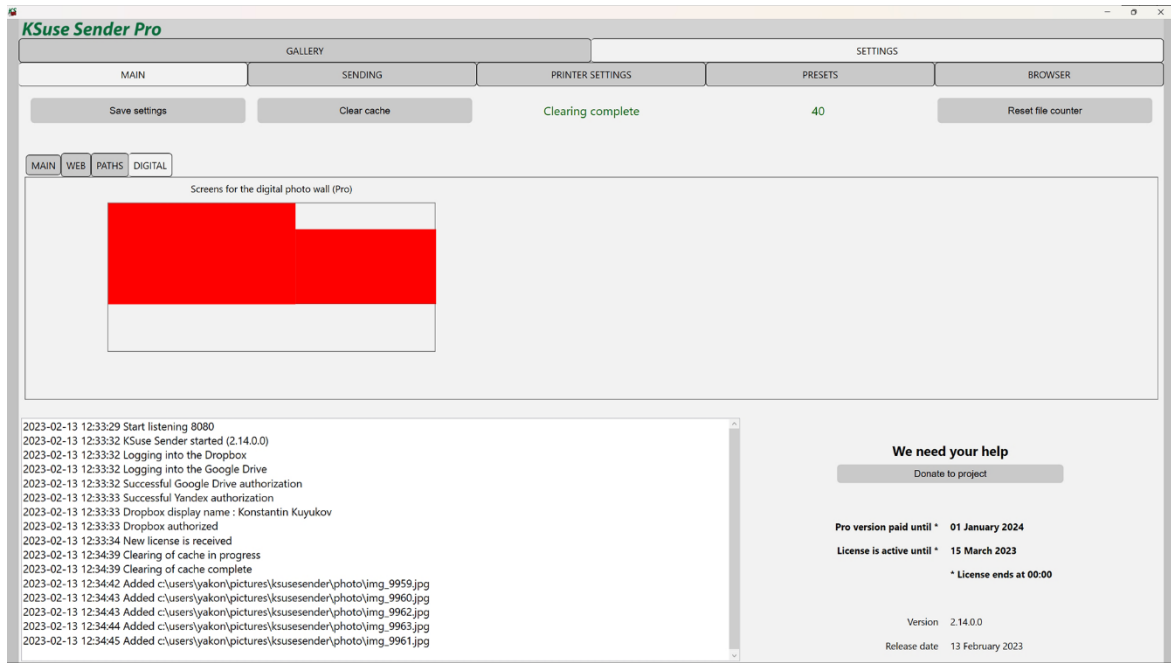
“Paths” tab



Here is a choice of paths from where the program reads images and videos for the gallery, and also saves temporary files.

After saving the new values of the paths, you must restart the program!

“Digital” tab



Displays for displaying the gallery are selected in the central block by clicking on the display rectangle. The selected displays are highlighted in green.

Gallery works correctly only when the scale is 100% set in the properties of all monitors.

Sending

“Email settings” tab

The screenshot displays the 'Email settings' tab in the KSuse Sender Pro application. The interface is organized into a grid of tabs: MAIN, SENDING, PRINTER SETTINGS, PRESETS, and BROWSER. Under the SENDING tab, there are sub-tabs for EMAIL SETTINGS, EMAIL TEMPLATES, EMAIL DATABASE, SMS SETTINGS, SMS DATABASE, WHATSAPP SETTINGS, and WHATSAPP DATABASE. The main content area includes a 'Save settings' button and several configuration options:

- Enable sending:** A checked checkbox.
- Automatically resend:** A checked checkbox.
- SMTP timeout (in seconds):** A text input field containing '180'.
- Send through SendGrid:** A checked checkbox.
- SendGrid API Key:** A masked text input field.
- Sender's name (for SendGrid):** A text input field containing 'Konstantin'.
- Sender's email address (for SendGrid):** A text input field containing 'yakonus@gmail.com'.
- Check Sendgrid settings:** A button.
- Mailbox:** A dropdown menu set to '1'.
- Is active:** A checked checkbox.
- Sender's name:** A text input field containing 'Konstantin'.
- Mail server:** A text input field containing 'smtp.gmail.com'.
- Login:** A text input field containing 'yakonus@gmail.com'.
- Password:** A masked text input field.
- Smtp port:** A text input field containing '587'.
- SSL (TLS):** A checked checkbox.
- Check mailbox settings:** A button.

To send via SendGrid, you need to create an API key in your account and copy it to the program settings.

The “Automatic resending” option allows automatic repeated attempts to send messages with the “Error” status. Attention! Sharp increase in traffic volume with unstable internet connection is possible.

When entering the data of several mailboxes, the program will send emails in turn from each. **In the Free version, sending is done from only one mailbox.**

If the "Login" field contains the full email address, then in the "Sender's name" field you can simply enter a display name. If the login is not equal to the e-mail address, then in the field "Sender's name" you must enter the e-mail from which the sending will be made in square quotes. For example: Konstantin <yakonus@gmail.com>

SSL connection on port 465 is not supported!

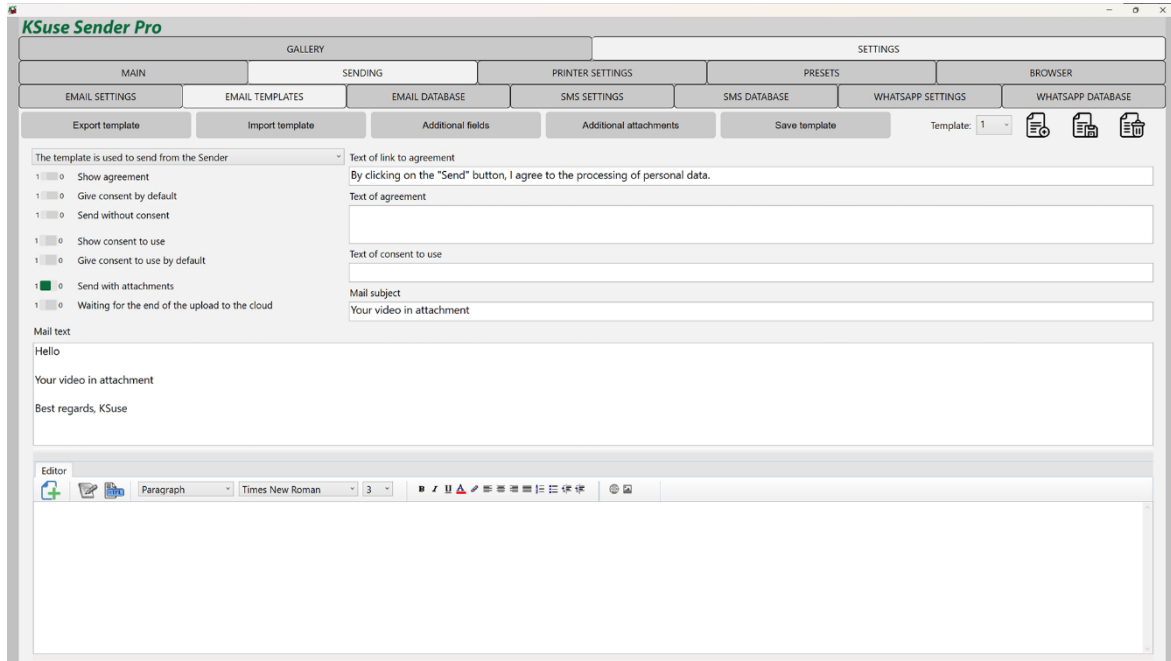
Gmail requires you to use a secure app password instead of your account password. To use Gmail, you need to enable two-factor authentication and create an app password:

<https://accounts.google.com/signin/v2/challenge/pwd>

<https://myaccount.google.com/apppasswords>

You must use the generated password in Sender instead of the account password.

“Templates” tab



It is possible to obtain two consents from the user. The first of these can be made mandatory.

There are 3 types of email templates: “Template is not used”, “The template is used to send in the Sender”, “The template is used to send on the site”.

Saving a template with one of the last 2 types, automatically sets the "Template not used" type for the previously selected one with the same type.

If a template for sending is not selected, then email will not be placed in the sending queue.

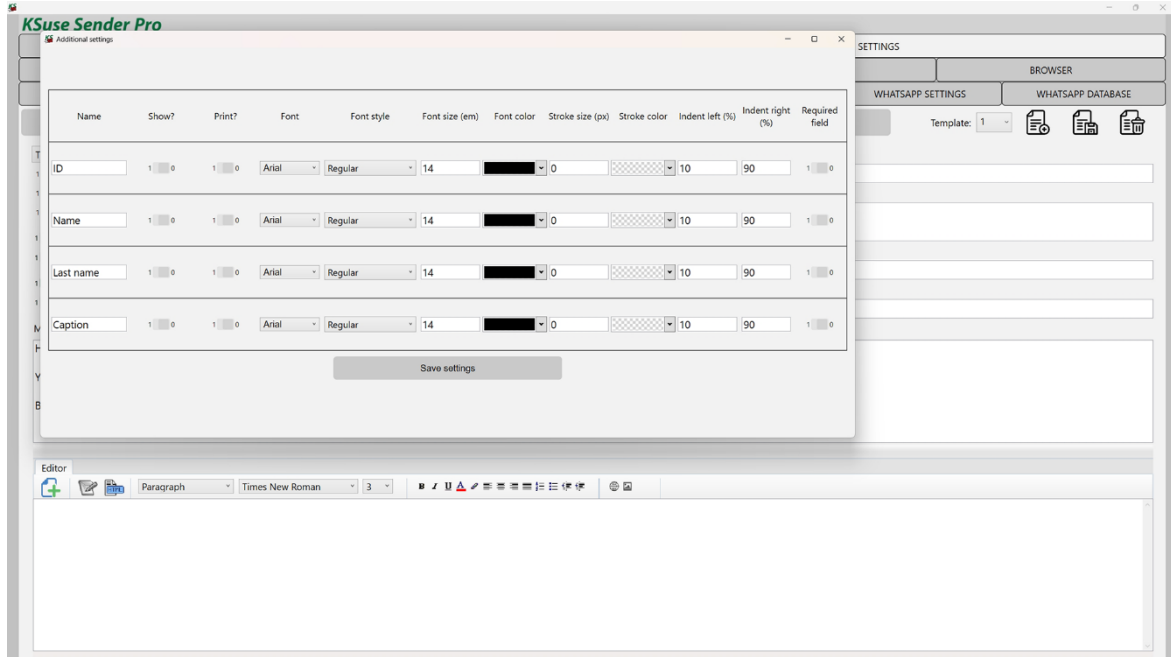
The template has the ability to enable / disable the attachment of files to the email.

Auto replace tags:

- {InternetGalleryLink} - link to the Internet gallery
- {InternetGalleryPhotoLink} - link to the file in the Internet gallery
- {CloudGalleryLink} - link to a folder in Dropbox / Google Drive
- {CloudFileLink} - link to file in Dropbox / Google Drive
- {GoogleDriveGalleryLink} – link to a folder in Google Drive
- {GoogleDriveFileLink} – link to file in Google Drive
- {DropboxGalleryLink} – link to a folder in Dropbox
- {DropboxFileLink} – link to file in Dropbox

Attention! The visual editor makes changes to the code. If you want to keep the text unchanged, then do not switch to the visual editor mode.

“Additional Settings” tab



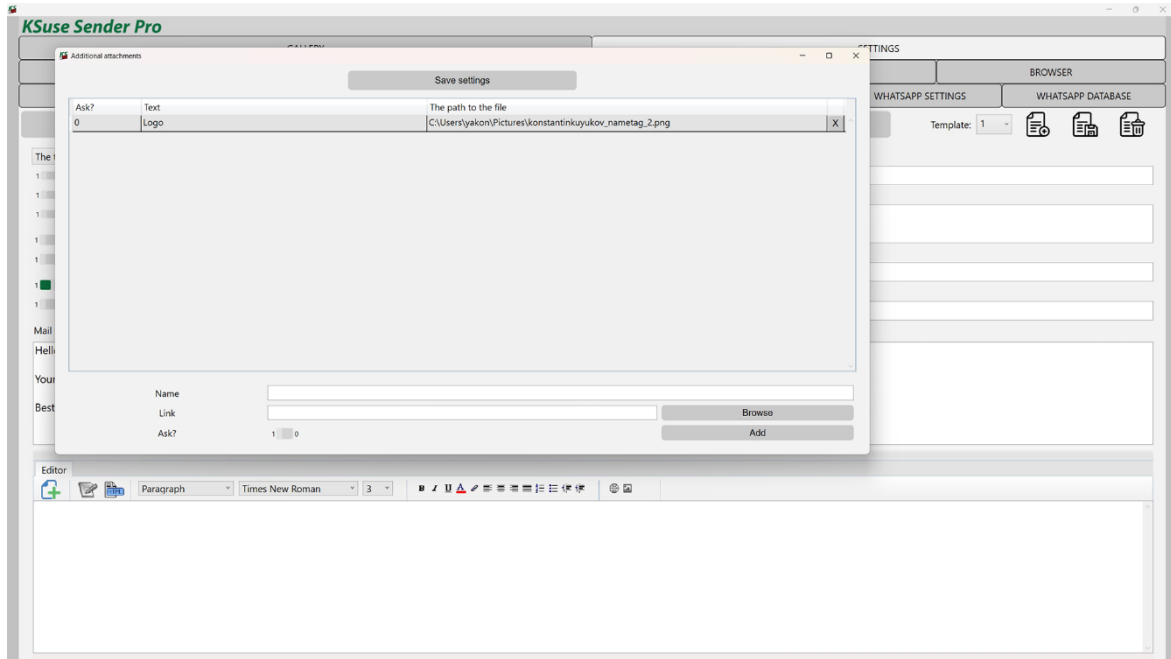
In this window, you can choose which additional data entry fields to display in the web gallery.

The collected data is contained in the exported xls file.

It is also possible to turn on printing of the entered data on photos choosing the position, font, and color of labels.

Additional fields can be renamed and made mandatory.

“Additional Attachments” tab

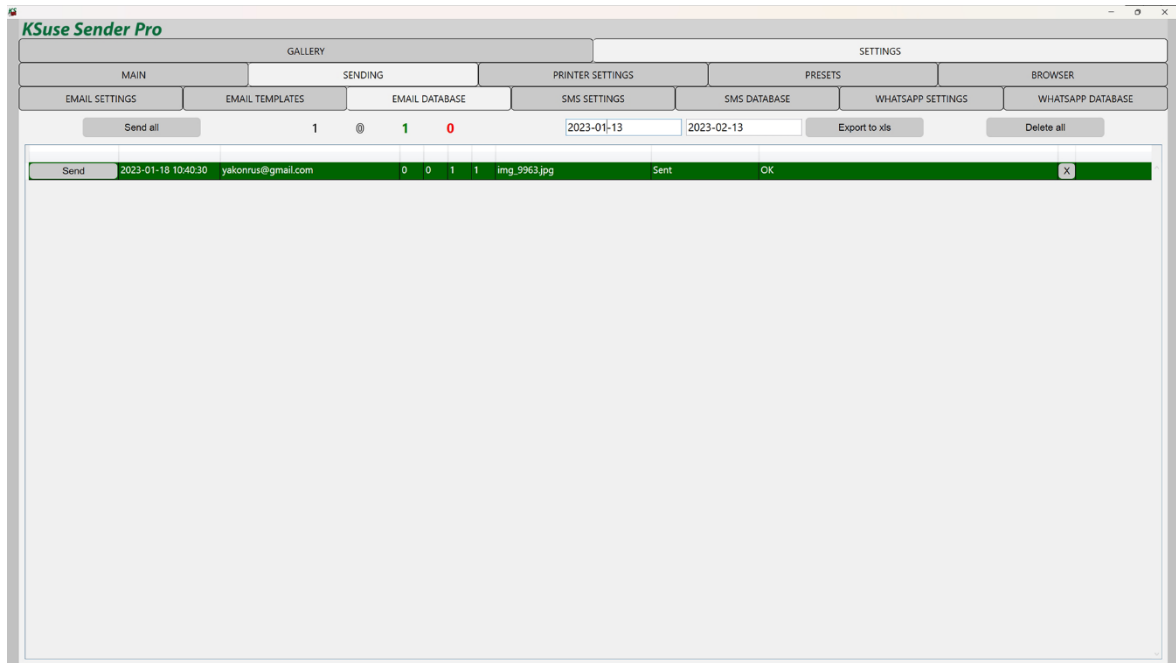


In this window, you can add additional attachments to emails.

Attachments with the value "Ask?" equal to 0 will always be added to the email.

If the value 1 is selected, then in galleries version 2 and 3, under the field for entering an e-mail address, checkboxes with a comment specified in the "Text" field will be displayed. The attachment will be added to the email only if the guest leaves the checkbox checked.

Database window



In this window, you can see the status of all sent emails in the selected date range and resend if necessary.

The width of the columns can be changed by moving the separators in the table header.

The "Send All" button re-sends all emails for the specified date interval except those already sent. While holding down the Shift key, all messages are resent, including those successfully sent.

In the table you can change the email address of the recipient and the number of the template.

"A" - whether consent was given to the processing of personal data

"U" - was consent to the use of the video given

"T" - email template number

"M" - mailbox number

You can delete an error line by selecting and pressing the Delete key, or by pressing the X button in the desired line.

Black number - total emails

White number - sending

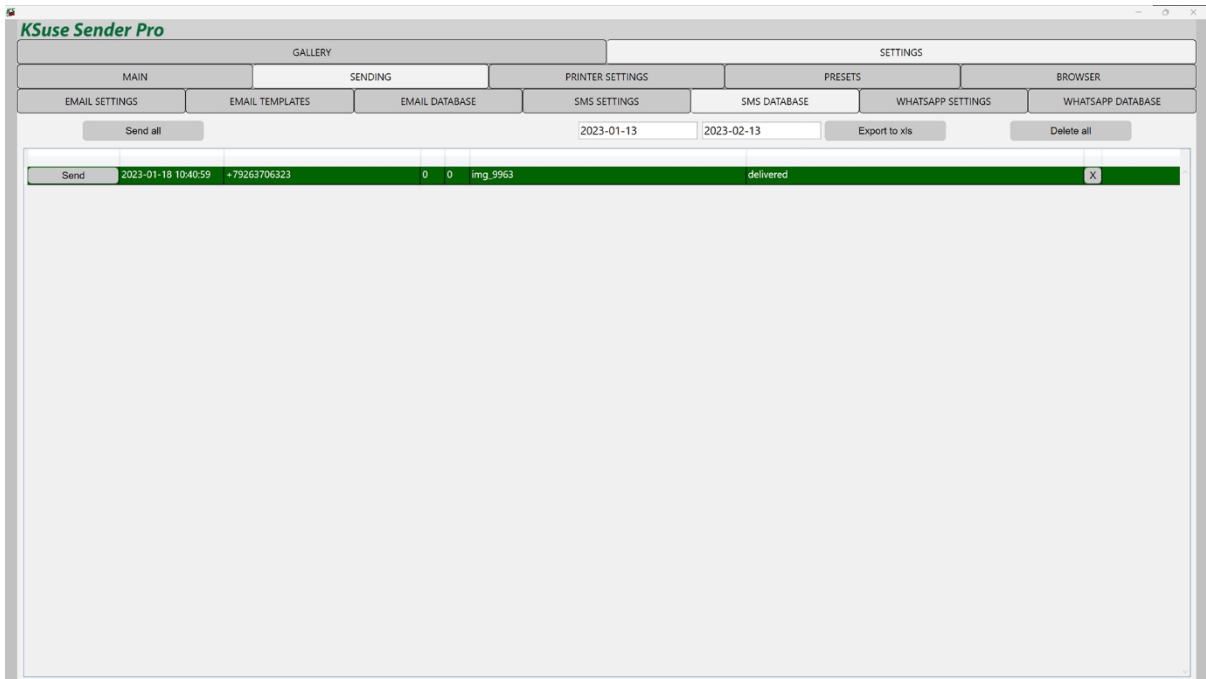
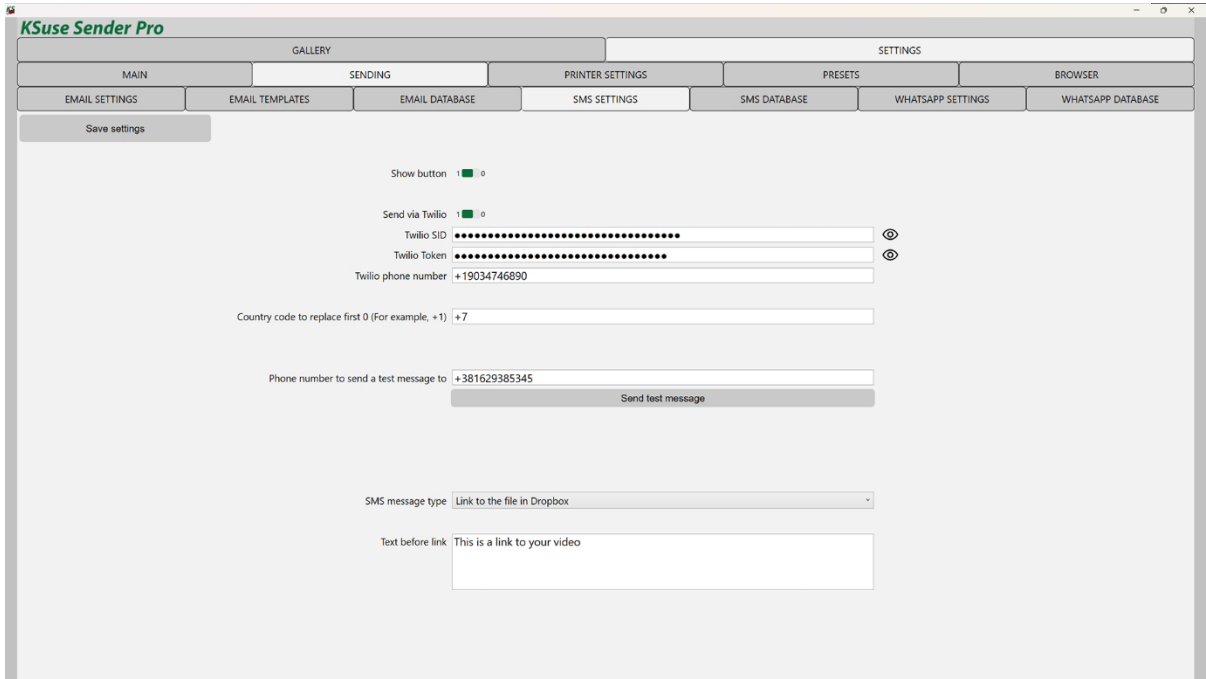
Green number - sent

Red number – errors

If all the specified file types were found, the line gets the green status “Sent”.

If no necessary attachments are found, then the line receives a blue status of “Missing file”.

"SMS settings" window



Attention! Additional text boxes and consent checkmarks appear in the galleries according to the selected email template, even if email is turned off.

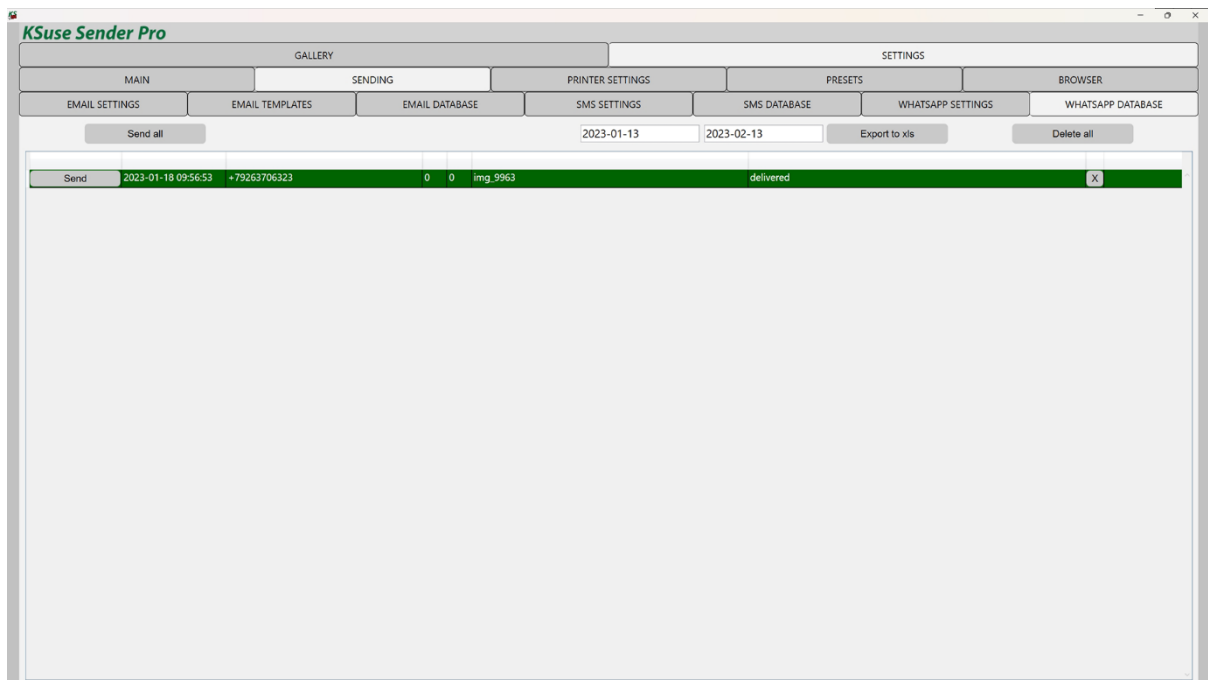
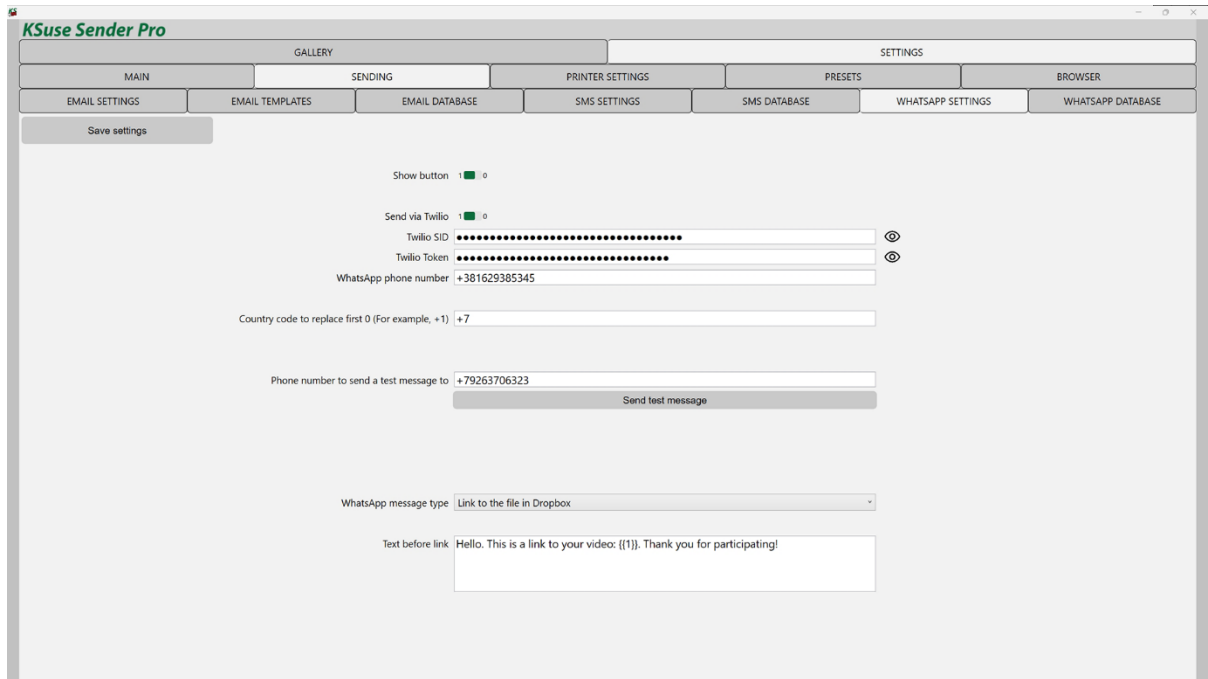
Using this block, it is possible collect phone numbers for manual sending or use the Twilio service to send SMS.

You cannot send a large amount of data in SMS. Accordingly, not the files themselves are sent in SMS, but links to those uploaded to cloud services. Before using sending links via SMS, you need to set up file uploads to one of the cloud services.

SID, Token and phone number must be copied from your Twilio account.

If visitors enter a phone number with a leading 0 when sending, then that 0 will be replaced with the default country code.

"WhatsApp settings" window



Attention! Additional text boxes and consent checkmarks appear in the galleries according to the selected email template, even if email is turned off.

Using this block, it is possible collect phone numbers for manual sending or use the Twilio service to send messages to WhatsApp.

In your Twilio account, you need to link your Meta business account.

<https://console.twilio.com/us1/develop/sms/senders/whatsapp-senders>

It is also necessary to approve the template of your message.

<https://console.twilio.com/us1/develop/sms/senders/whatsapp-templates>

Attention! The text of the message in Sender must exactly match one of the templates that passed the test!

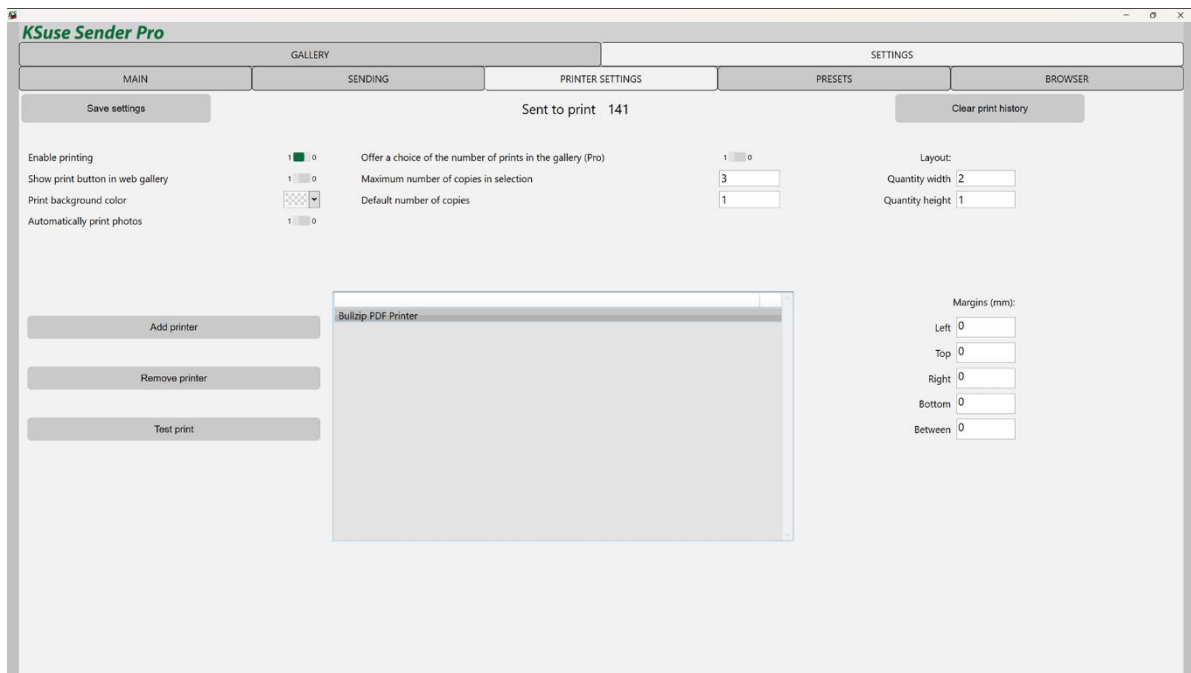
{{1}} will be replaced with a link.

SID, Token and WhatsApp phone number must be copied from your Twilio account.

If visitors enter a phone number with a leading 0 when sending, then that 0 will be replaced with the default country code.

Before using sending links via SMS, you need to set up file uploads to one of the cloud services.

Printer settings



Photos for printing are selected through the web gallery.

When printing is on, photos are automatically sent to the printers added to the list. Print jobs are sent to each printer in turn. Printers in offline state are skipped.

Do not enable the "Printing enabled" option if printers are currently unavailable!

Attention! Paper size and orientation is defined in the printer settings in Windows! These parameters must be the same on every printer added to the list!

Using the "Margins" and "Layout" settings you can place several photos on one printed sheet.

Margins are not related to margins in printer settings! These are additional indents of the photo from the edge of the sheet.

Margins are configured separately for each printer in the list.

Fields are filled with the color selected in the "Print background color".

By setting the margins in the program, you can eliminate the cropping of the photo by the printer. If the printer cuts the photo, first increase the margins to such a value that they appear on the print, and then reduce them exactly as far as they are visible.

With the help of the option "Offer a choice of the number of prints in the gallery" it is possible to enable the output of the selector of the number of printed copies in the built-in and web galleries. The limitation of the number of copies and the default value are also set here.

When the option "Automatically print photos" is enabled, the photo will be printed in the quantity specified in the "Number of copies by default" immediately after adding to the gallery.

The program keeps a list of all printed files.

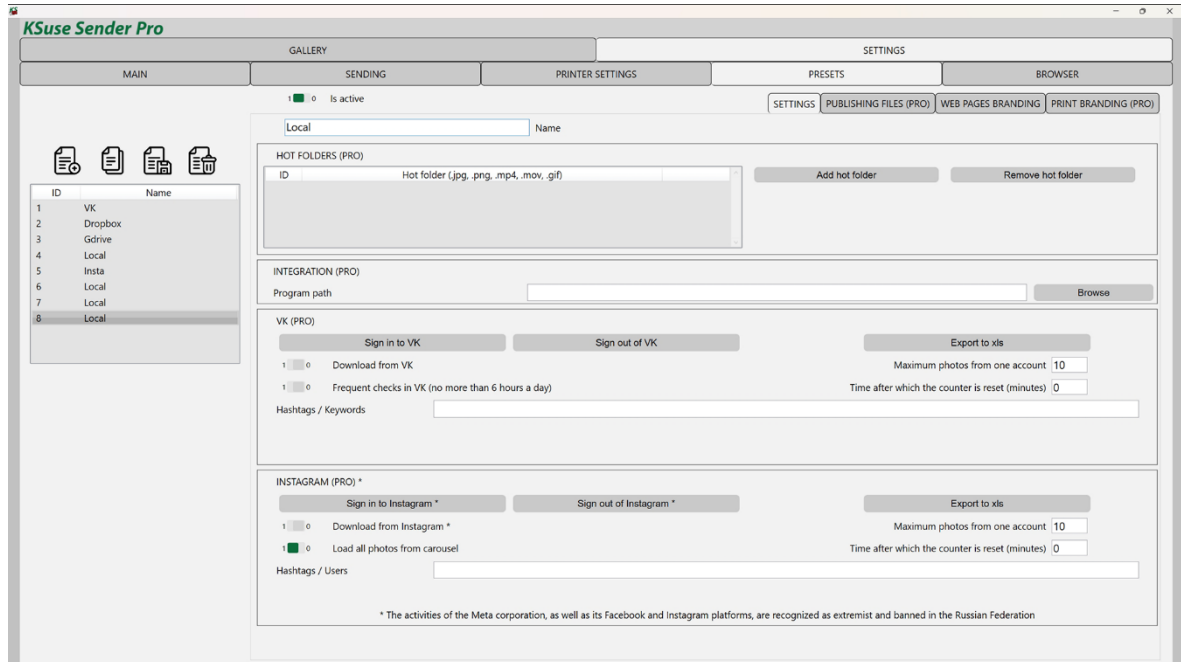
Before starting a new event, it is recommended to clear the history, as automatic printing checks if this file has already been printed in the print history.

Presets Settings

A preset with the “Enabled” option enabled is used.

To apply the settings, you must save the preset!

"Settings" tab



Block “Integration”

Selecting the program that starts when the web server receives a corresponding request.

Block “Hot folders”

A list of folders in which the program will search for new photos, videos, gifs is set here.

If the file names in different folders are the same, and the creation datetime does not differ by more than 10 minutes, then they are considered one snapshot and will be sent together.

If the list of hot folders is empty, then the folder specified in the main settings is used.

The Free version does not use the hot folders specified here.

Block "Instagram"*

Here, hashtags are indicated, separated by commas, photos from which the program needs to download to its gallery.

Does not work without authorization. For authorization, you must use the built-in browser.

Attention! Don't use your main account! The account used in Sender may be banned!

It is highly recommended that you create multiple business accounts that will only be used on one computer in this program.

Instagram* may require device confirmation. The easiest way to do this is via SMS, so it is recommended to bind accounts to a phone number.

Filters by date and time from the main Sender settings apply to downloading files.

It is possible to limit the number of photos printed from one account at a specified time interval. Affects automatic printing only.

If the time interval is 0, then the limitation is disabled.

Attention! When you change the active preset or clear the cache, the database of downloaded photos is cleared.

Downloading in Sender Free is presented in demo mode and is limited to 10 files.

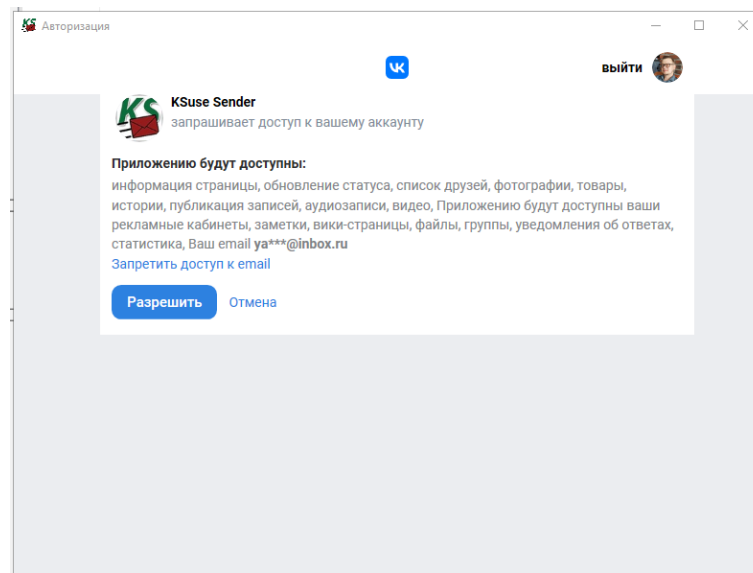
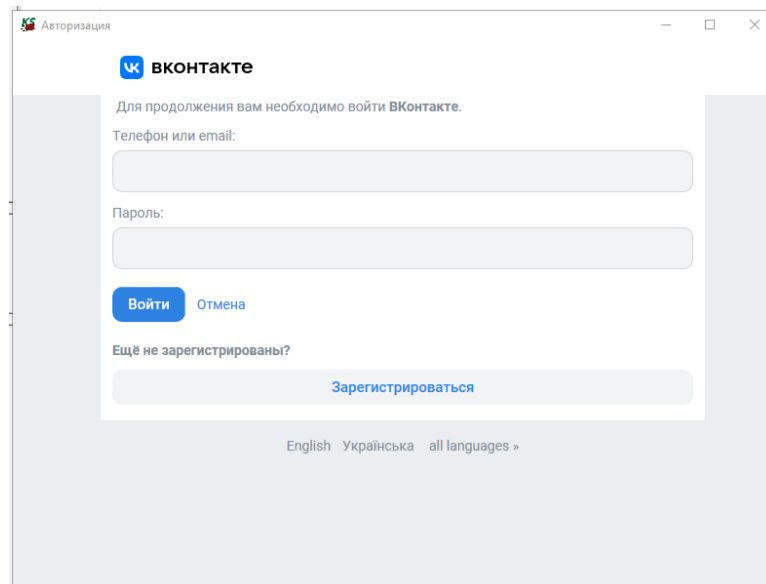
* The activities of the Meta corporation, as well as its Facebook and Instagram platforms, are recognized as extremist and banned in the Russian Federation

"VK" tab

Key words, hashtags are indicated here, separated by commas. The program searches for posts containing them and downloads attached photos to the gallery.

You can choose to upload photos only if you are logged in to VK.

A pop-up authorization window appears after clicking on the "Sign to VK" button.



It is possible to limit the number of photos printed from one account in a specified time interval. Only applies to automatic printing.

If the time interval is 0, then the restriction is disabled.

Downloading in Sender Free is presented in demo mode and is limited to 10 files.

Attention! When you change the active preset or clear the cache, the database of downloaded photos is cleared.

The standard query interval in VK is 1.5 minutes.

It is possible, using the option "Frequent checks in VK (no more than 6 hours a day)" to reduce the interval to 30 seconds. When using more than 6 hours a day, requests may be limited by VK.

“Publishing Files” tab

On this page you can export the QR code of the gallery for printing.

And also enable / disable the display of QR codes of the gallery and files in the built-in and web galleries, as well as on other pages.

You can upload photos to the online gallery, Dropbox and Google Drive at the same time. In the settings of QR codes, you must select which links are used.

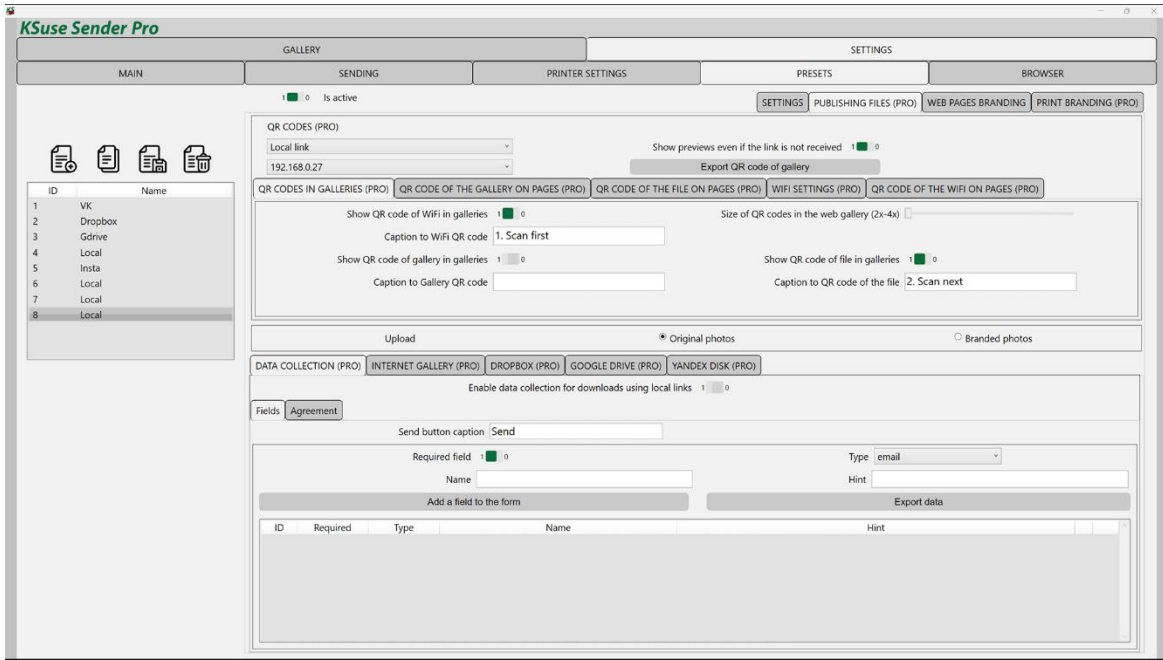
It is possible to display QR codes on the “last” and “carousel” web pages. This window enables the output of QR codes and configures their size and position on the page. After making changes, you need to refresh the web page.

To use local links, you need to set up guest WiFi, that is, guests must be on the same network as the computer running Sender.

When using local links in the selector, you must select the IP address that works in this WiFi network.

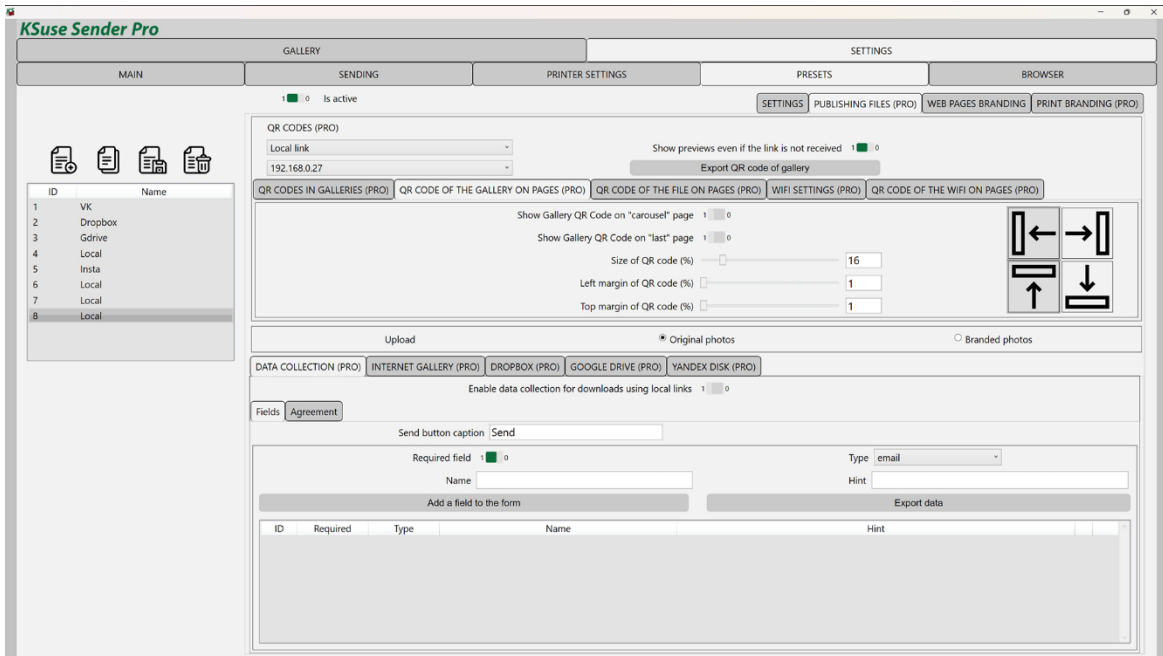
In the Free version, local links work in demo mode. They always open the same file.

“QR codes in Galleries” tab



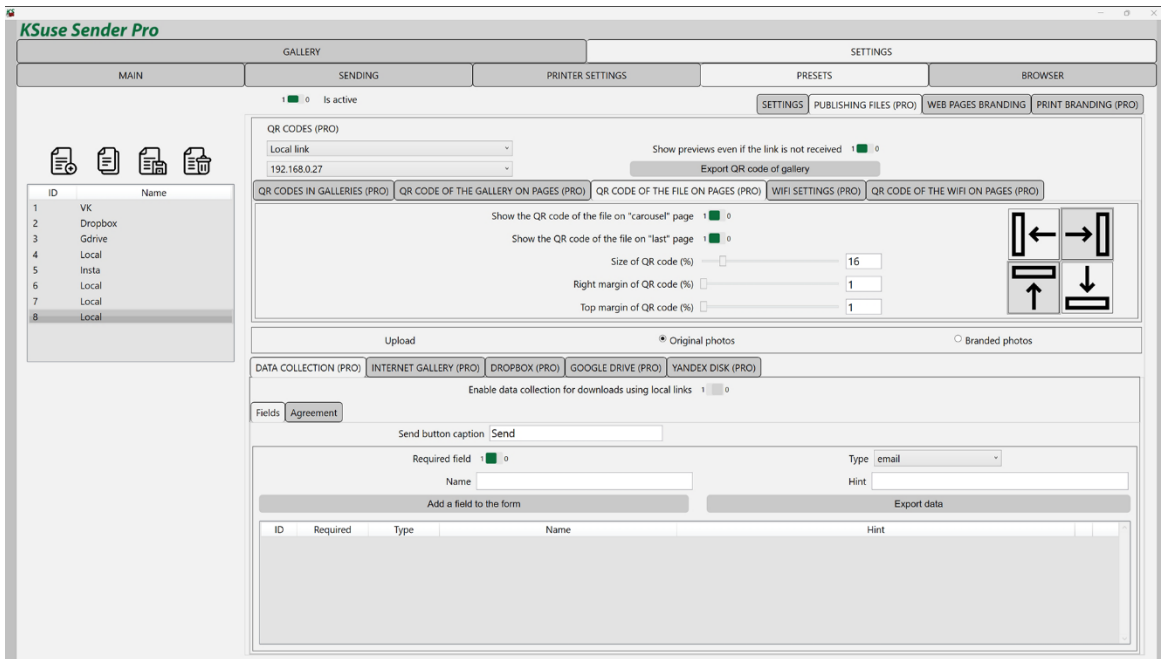
In this tab, you can enable the display of 3 types of QR codes in galleries. And also add captions to QR codes.

“Gallery QR Code on Pages” tab



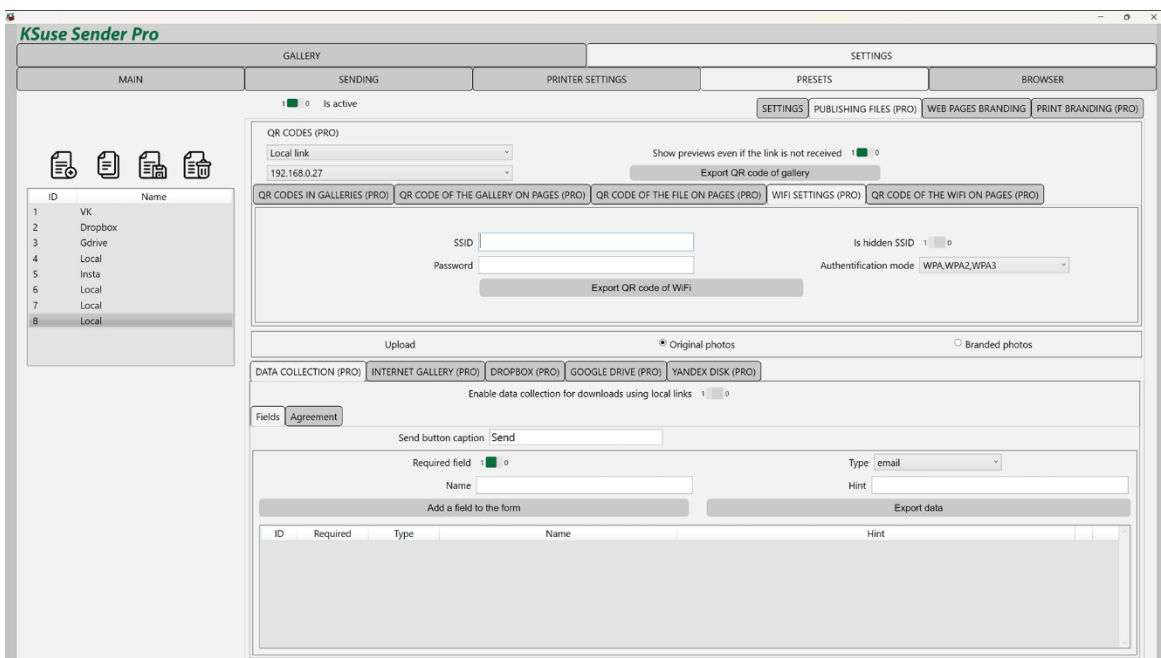
Enabling and configuring the position of the QR code of the gallery on the web pages "carousel" and "last".

“File QR Code on Pages” tab



Enabling and configuring the position of the QR code of the file on the web pages "carousel" and "last".

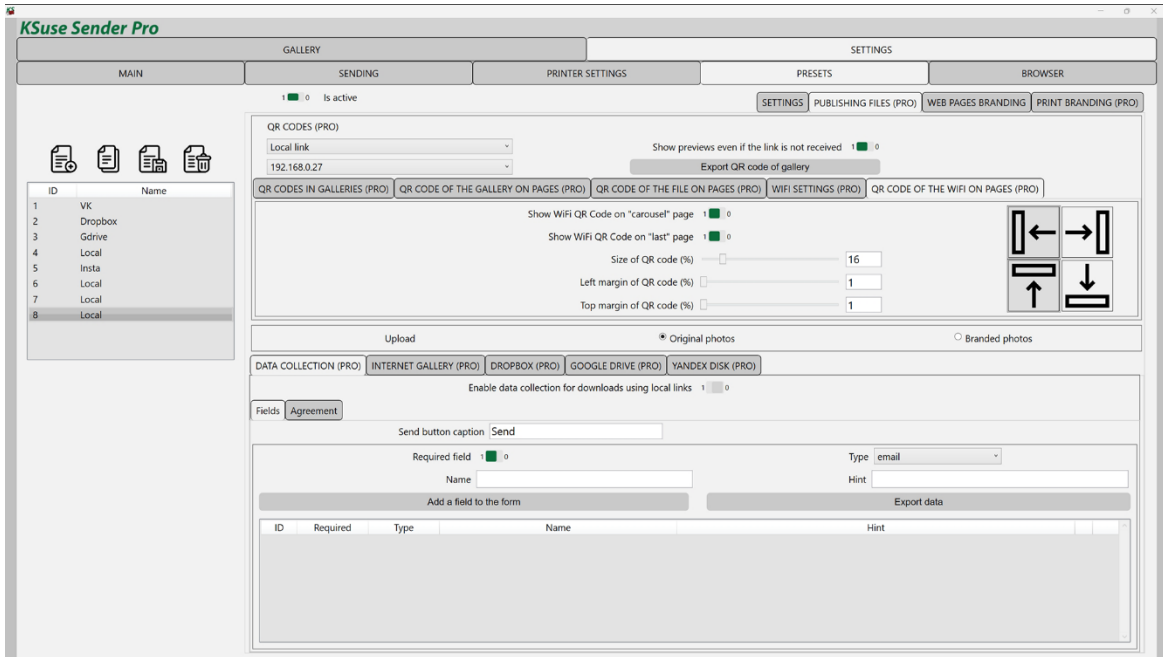
“WiFi Settings” tab



Entering the data of the WiFi network, the connection to which will be carried out when scanning the WiFi QR code.

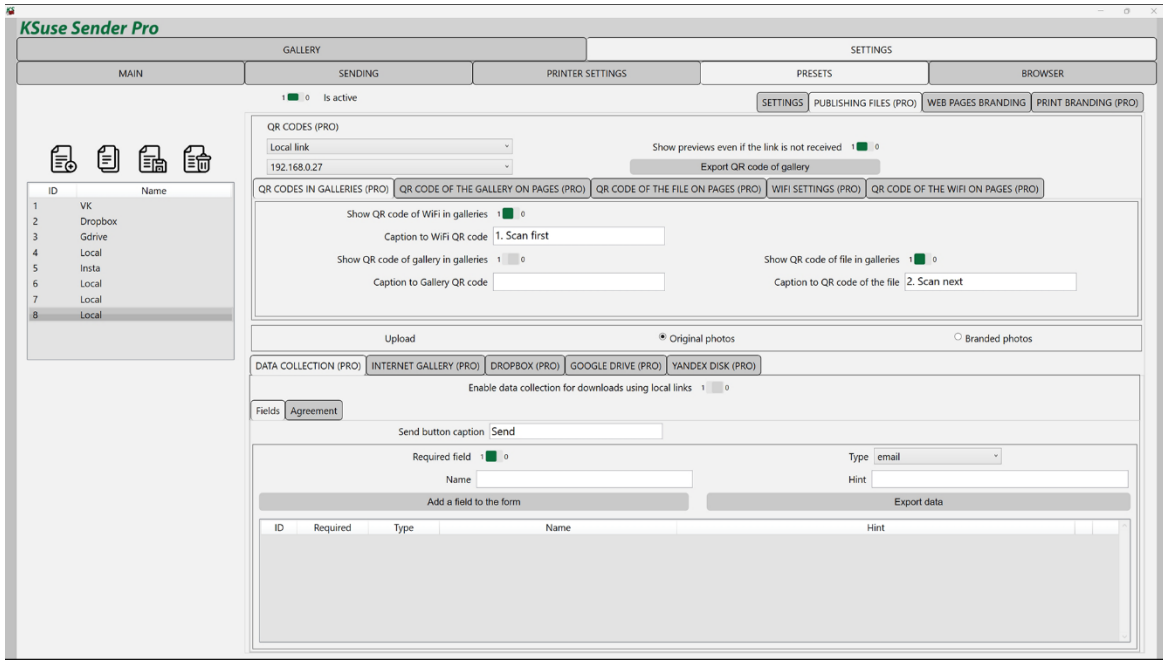
It is recommended to always create a WiFi network with a password, android may not connect to the network if there is no password.

“WiFi QR Code on Pages” tab



Enabling and configuring the position of the WiFi QR code on the “carousel” and “last” web pages.

«Data collection» tab

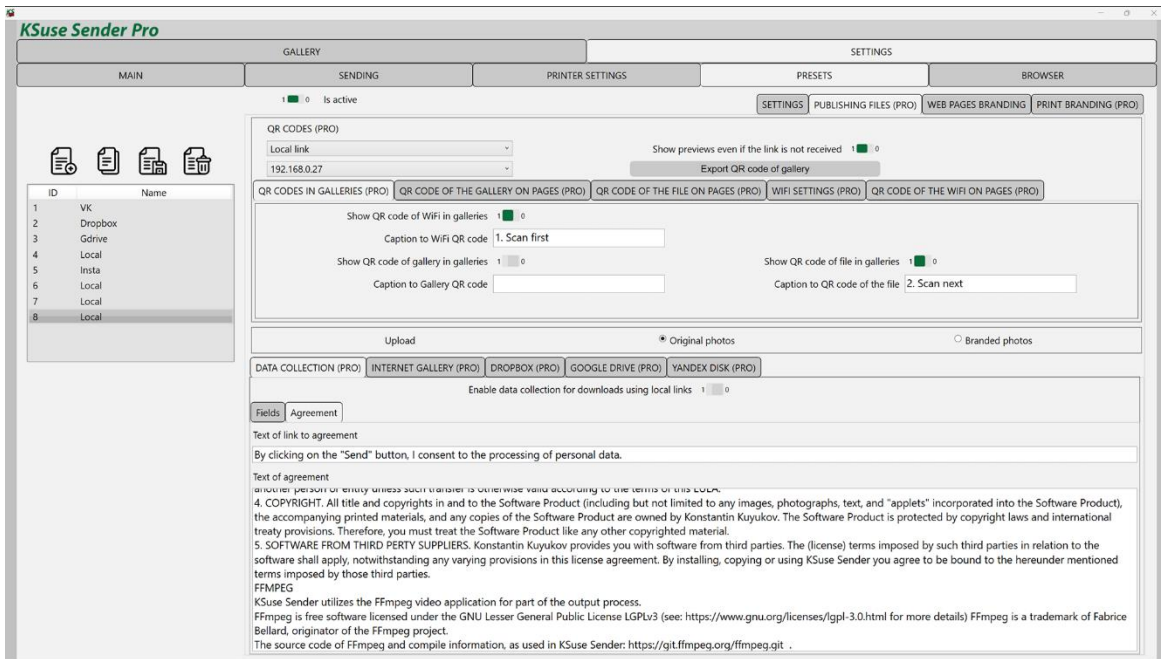


To download files using local links, it is possible to use the collection of visitor data.

When this option is activated, the visitor is asked to fill out a questionnaire before he gets access to the file.

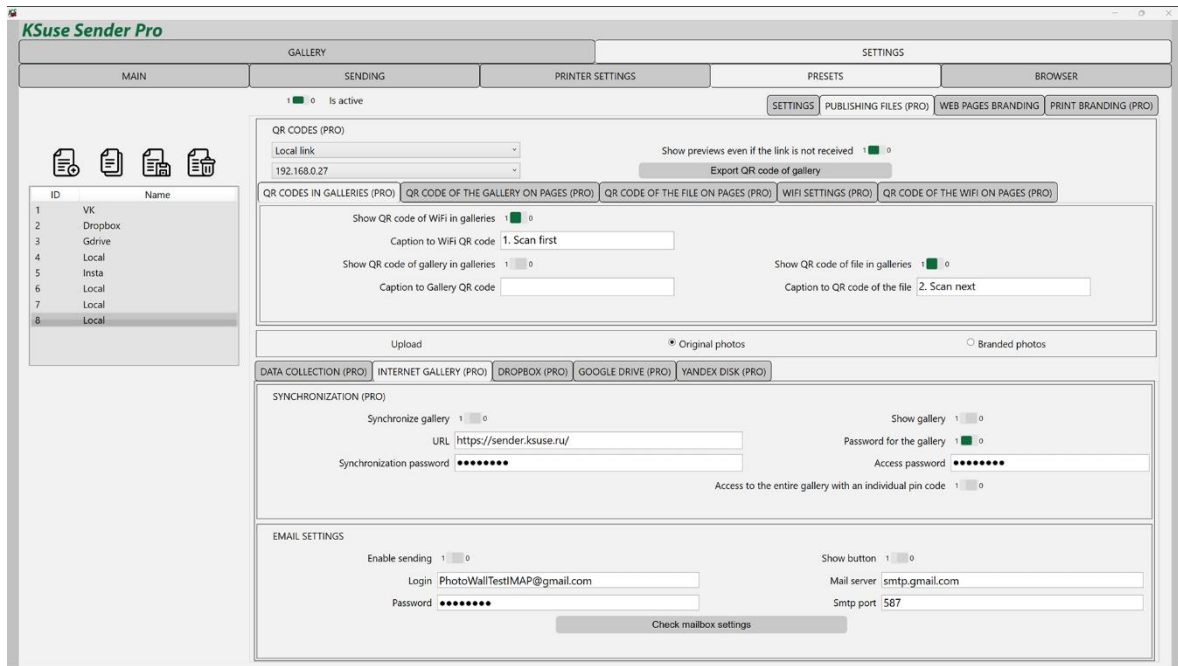
In this tab, a list of questionnaire fields is created.

Using the "Export data" button, you can download in xls format all the data collected using the selected preset.



In this tab, you enter a short text of the consent to the processing of personal data and the full text, which opens in a separate page when you click on the short text.

"INTERNET-GALLERY" tab



The online gallery is only available in the Pro version.

In this tab, enter the website address for the online version and the synchronization password.

The online gallery runs in php 7.2 and later. The content is loaded via ajax using the jquery library without refreshing the page, which allows you to embed the gallery into almost any of your pages.

You need copy the files from the "for_site" folder to the site. These files must correspond to the version of the program from which the gallery is synchronized.

You must set the Data folder to have permission 0777.

The pass.php file stores the sync password.

The dictionary.php contains the online gallery dictionary.

Attention! You cannot sync one gallery from different copies of the program! Synchronization is one-way, one Sender will hide files uploaded by another Sender.

"Show gallery" - enables displaying the entire gallery.

"Password for access" - sets a password for viewing the gallery.

A shot is always available using a pin-code regardless of the gallery settings.

With the "Access to the entire gallery with an individual pin-code", you can display the entire gallery, if you know the pin-code for any of the pictures. In fact, these are individual passwords for the gallery. That is, if you delete someone's picture from the gallery, then the person automatically loses access to the entire gallery.

Files with the same name, but different extensions or located in different hot folders, and created at the same time, are combined under one pin code.

Review: <https://youtu.be/mD9JiYy735Y>

Original or branded photos are uploaded to the Internet gallery. The preview is always branded.

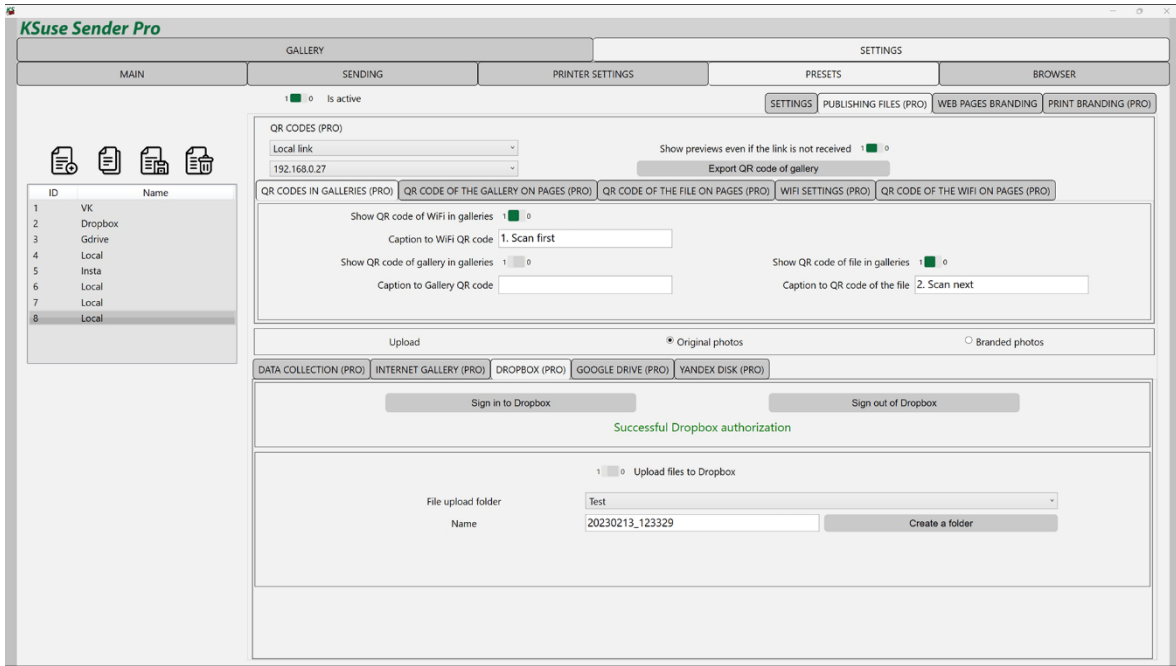
The online gallery has a button "Send email".

If you make e-mail settings on this page, then sending will be carried out through the specified mailbox. The email will contain the selected file as an attachment. The email template is selected in the "E-mail"- "Templates" tab.

Attaching images to html text is not supported. Use links to external sites.

If the data is not filled in, then the button will simply call the default email program on the device used and insert a link into the text of the email.


“DROPOX” tab



Uploading to Dropbox in Sender Free is presented in demo mode and is limited to 10 files.

To upload files to Dropbox, you need to connect the KSuse Sender 2 app to your Dropbox account.

Clicking the "Sign in to Dropbox" button opens a page on the Dropbox site where you need to allow the app to access your account.




Before you connect this app...

Make sure that you know and trust this developer. Allowing apps from developers you don't know may put your data at risk.

Why am I seeing this warning?

This app only has a small number of users and may not be the app you were intending to link.

Click Cancel if you are unsure whether you should be connecting an app to your Dropbox account. You can also find out more about [what to look for when connecting an app](#).



KSuse Sender would like to:

- **Edit** content of your Dropbox files and folders, **view** content of your Dropbox files and folders, and **view and edit** information about your Dropbox files and folders
- **View and manage** your Dropbox sharing settings and collaborators
- **View** basic information about your Dropbox account such as your username, email address and country

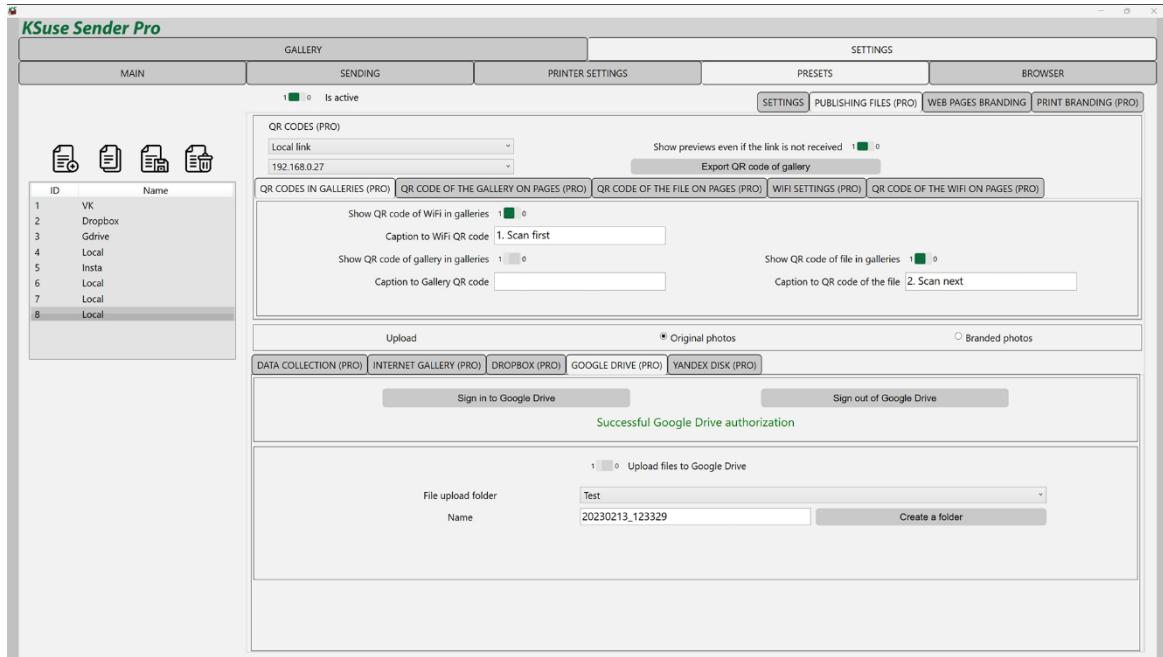
[Learn about permissions](#)

You can disconnect apps at any time in [connected apps](#) within your account settings.

Next, you need to create and select a folder for uploading files and save the preset.

If set to display only QR code of a file with a link to Dropbox, in the web gallery files will not appear until they are uploaded to Dropbox.

«GOOGLE DRIVE» tab



Uploading to Google Drive in Sender Free is presented in demo mode and is limited to 10 files.

Setting order: https://youtu.be/u_55YAKWDuA

Before configuring the upload, you must make the preset active.





To upload files to Google Disk, you need to connect the Ksuse Sender application to your account.

When you click on the "Sign in to Google Drive" button, a page on the Google website opens, where you need to allow the application to access your account.

Sign in with Google

Choose an account

to continue to [KSuse Sender](#)

-  **Konstantin Kuiukov**
yakorus@gmail.com
-  **Konstantin Kuyukov**
ksusefriends@gmail.com
-  **Test Mail Settings**
testmailset.ksuse@gmail.com
-  **Use another account**

Before using this app, you can review KSuse Sender's [privacy policy](#) and [Terms of Service](#).

English (United Kingdom) ▾ Help Privacy Terms

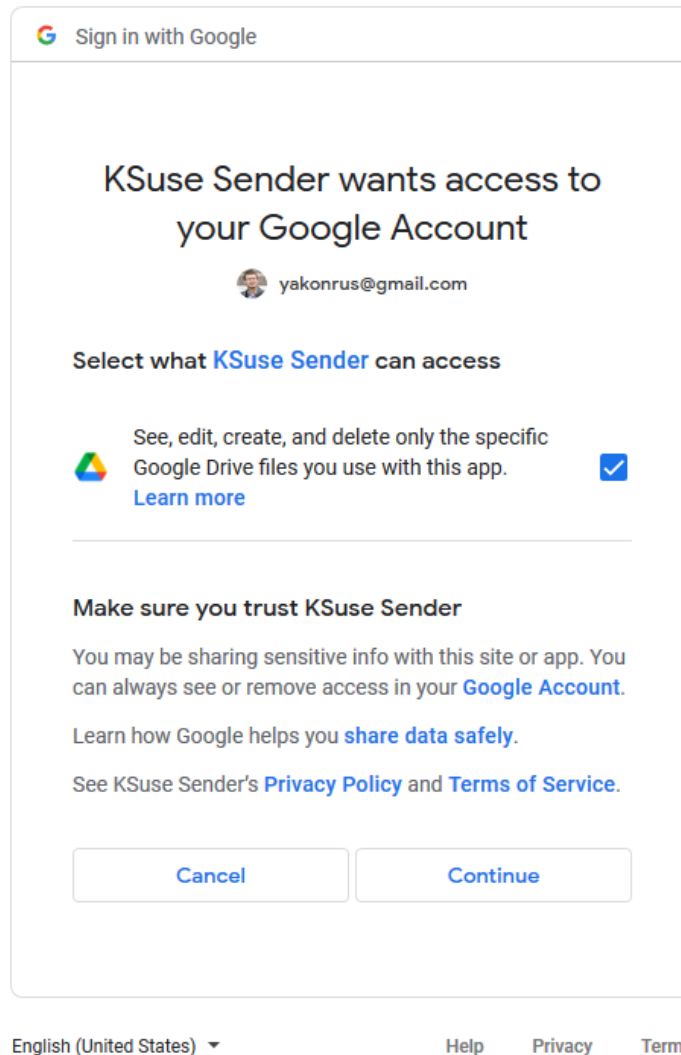
Google

Google hasn't verified this app

You've been given access to an app that's currently being tested. You should only continue if you know [the developer](#) that invited you.

[Continue](#) [Back to safety](#)

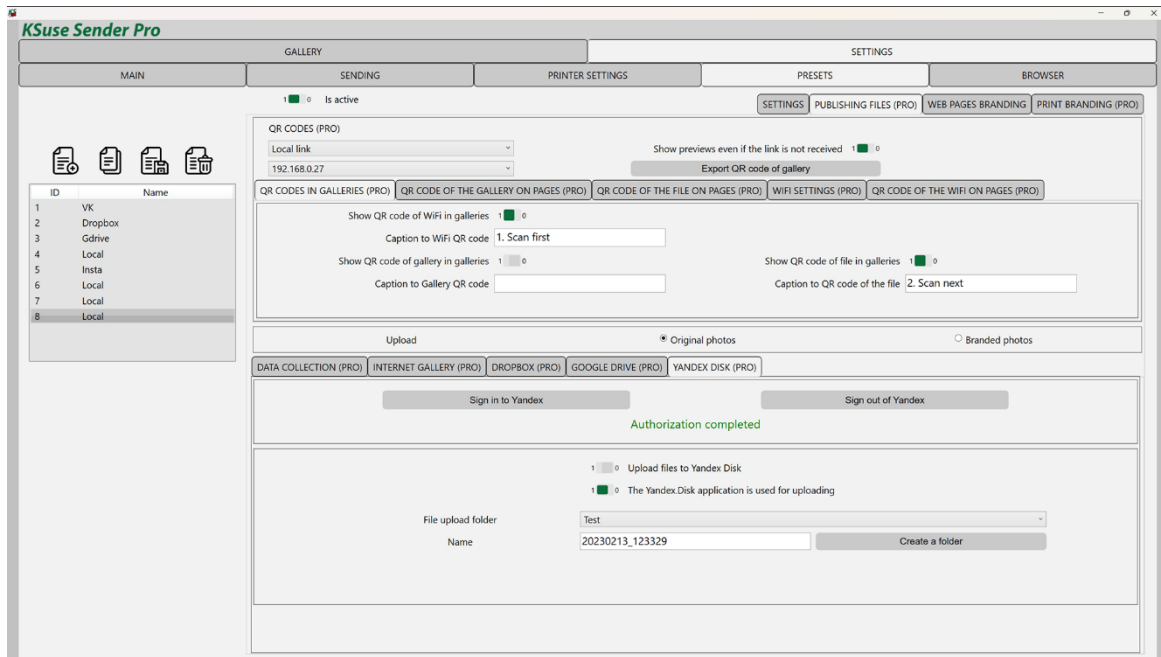
English (United Kingdom) ▾ Help Privacy Terms



Next, you need to create a folder for uploading files, select it and save the preset.

If set to display only QR code of a file with a link to Google Drive, in the web gallery files will not appear until they are uploaded to Google Drive.

«YANDEX DISK» tab



Uploading to Yandex Disk in Sender Free is presented in demo mode and is limited to 10 files.

The upload to Yandex Disk is very slow due to reasons beyond our control!

Setting order: https://youtu.be/u_55YAKWDuA

Before configuring the upload, you must make the preset active.

To upload files to Yandex Disk, you need to connect the KSuse Sender application to your account.

When you click on the "Sign in to Yandex" button, a Yandex page opens in the built-in browser, where you need to allow the application to access your account.

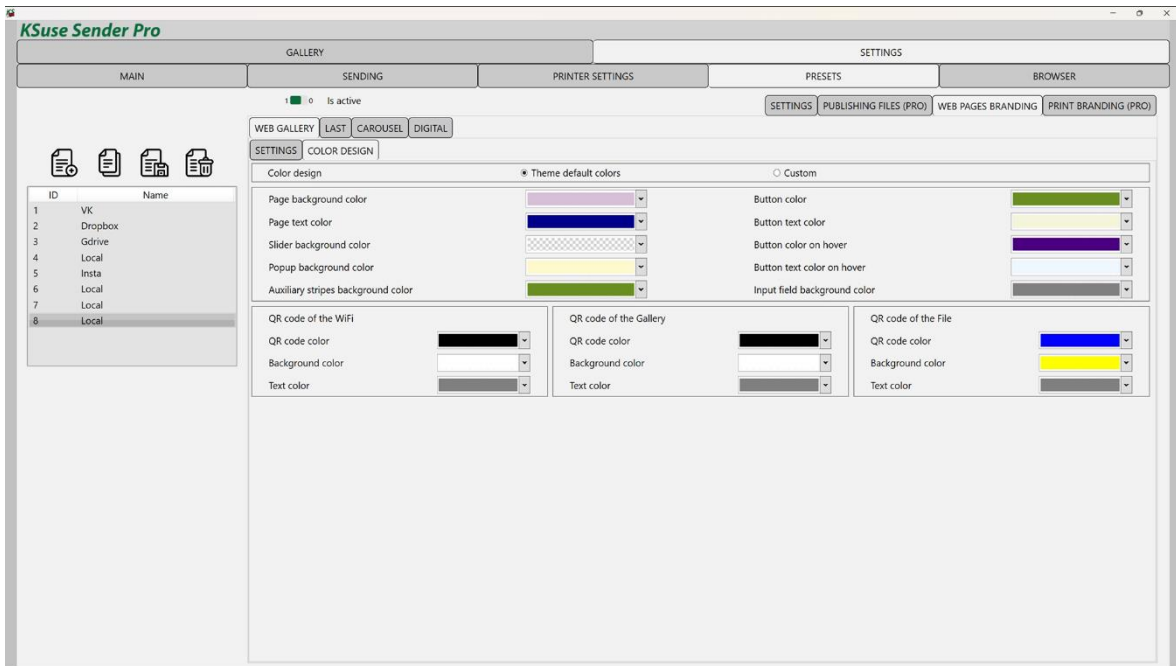
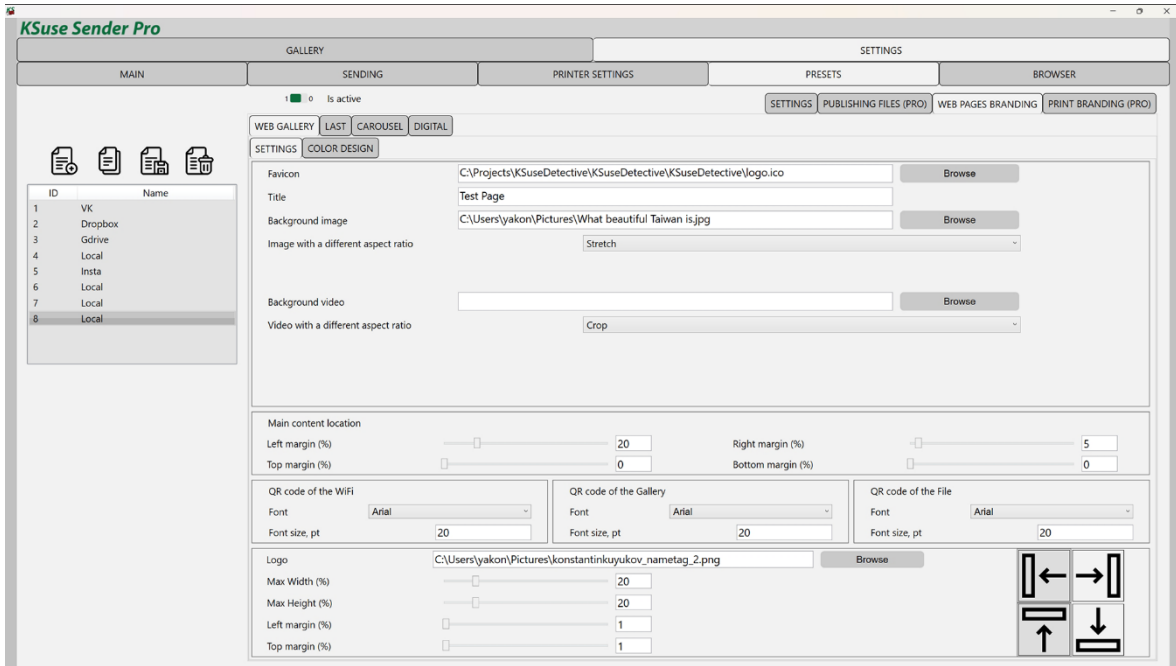
Next, you need to create a folder for uploading files, select it and save the preset.

If set to display only QR code of a file with a link to Yandex Disk, in the web gallery files will not appear until they are uploaded to Yandex Disk.

To speed up the upload, you can use the Yandex.Disk application. You need to place a hot folder on Yandex.Disk, that is, make the folder specified in Sender a hot folder. Then this program will upload files to the cloud. And in Sender, enable the option "The Yandex.Disk application is used for uploading." Then Sender will only receive links to uploaded files.

"Web Pages Branding" tab

«Web gallery» tab



In this window, you can configure the display of the web gallery.

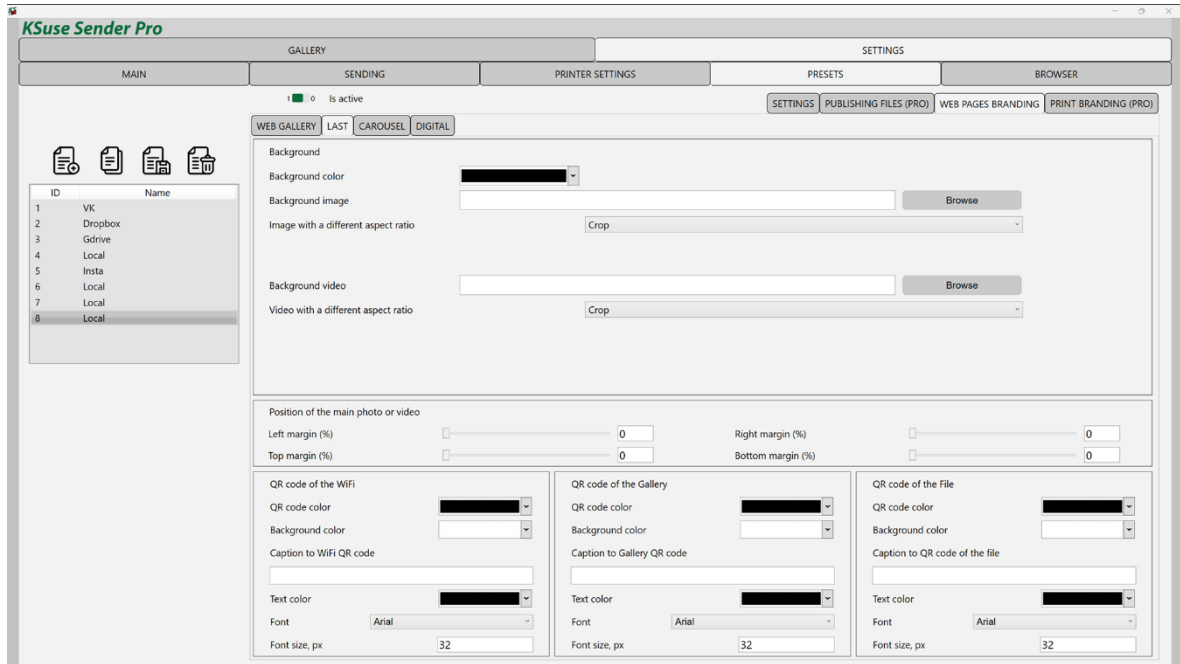
In the first tab, you can change the page title and icon.

When adding a background image or background video, it is possible to adjust its position on the page. The background image can be fit, stretched, or pasted at its original dimensions.

When adding a logo, specify the size and location of the area in which this logo will be inscribed. It is also possible to add padding from the edge of the page to the main content so that the logo does not overlap the important elements of the page.

In the second tab, you can activate custom colors and select the colors of the elements you need.

«Last» tab

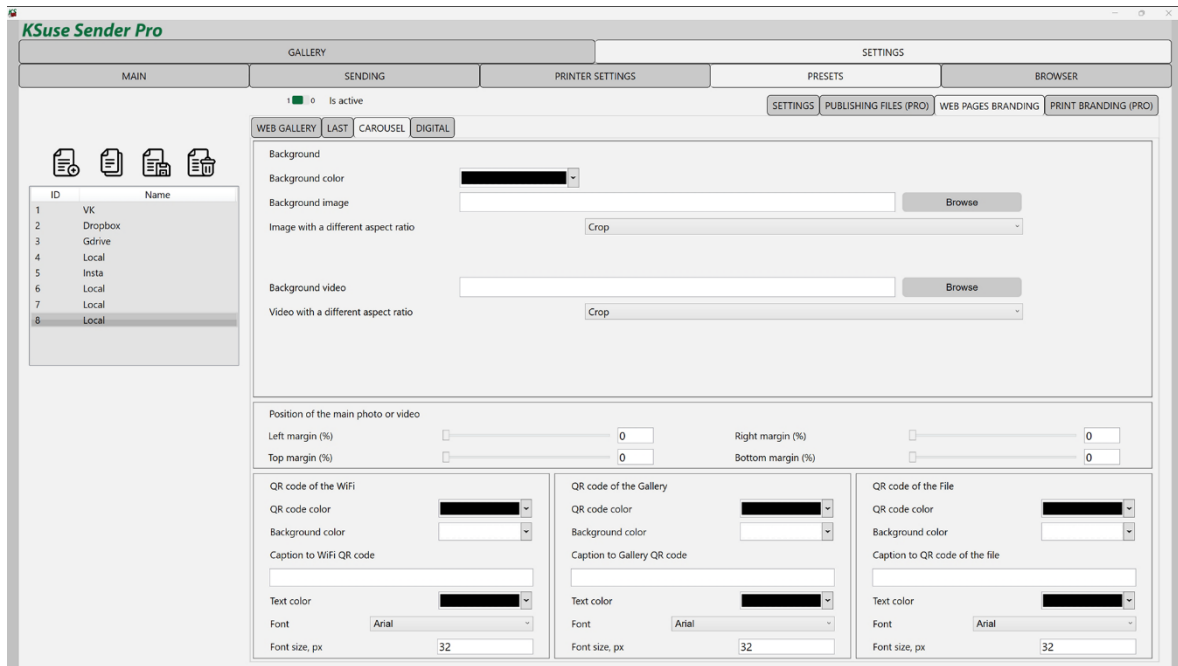


In this window, you can configure the display of the "last" page.

You can change the background color, add a background image and/or a background video. Images and videos can occupy both the entire screen and part of it, thanks to the location settings.

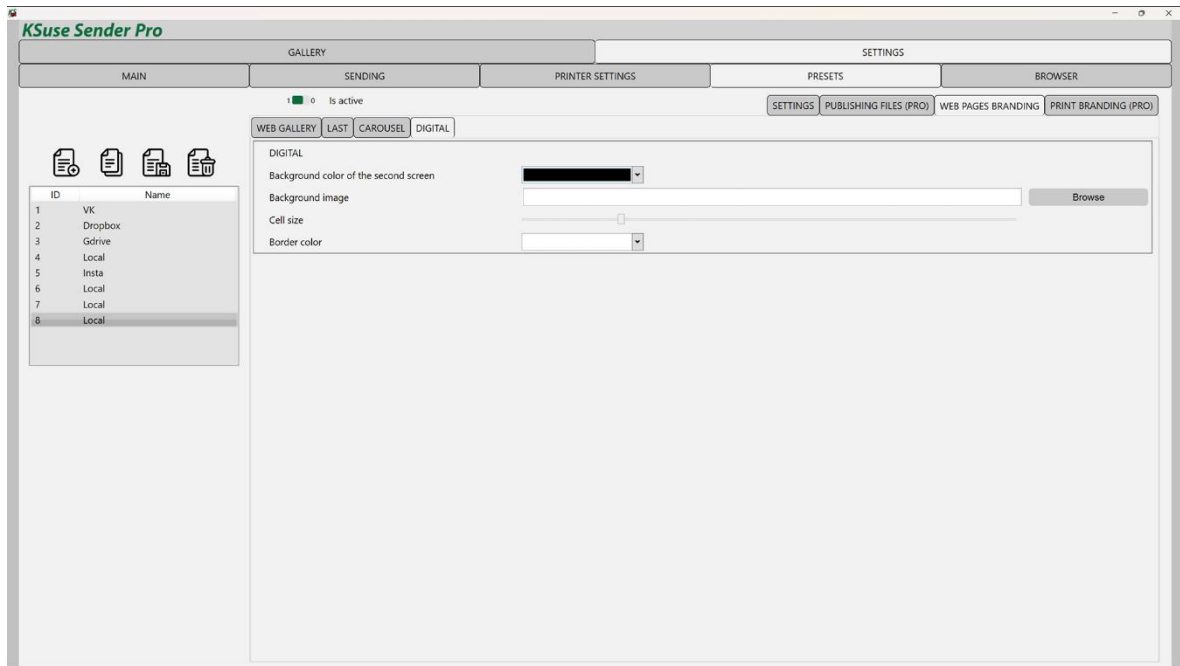
It is also possible to change the size and location of the output image, video.

«Carousel» tab



Similar to the "last" page settings.

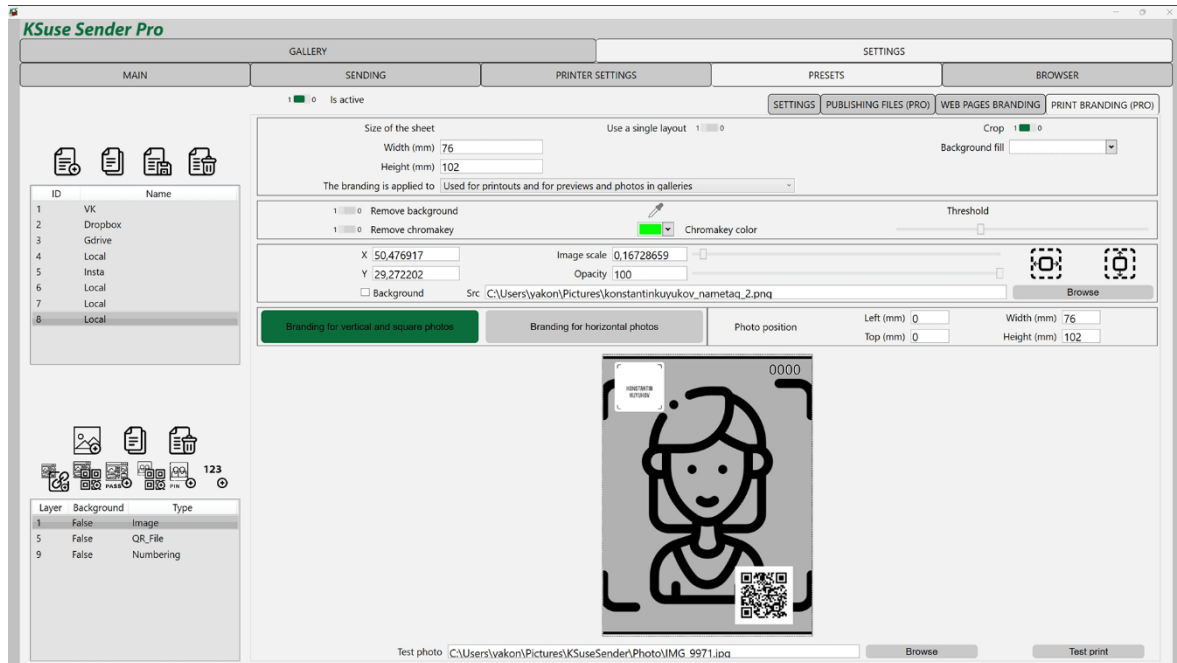
«Digital» tab



In this window, you can configure the display of the second window.

It is possible to set the background color or background image. The specified image is stretched to fill the entire screen.

"Print Branding" tab



The generated print size is set (the actual size depends on the printer settings) in this tab, the size and position of the photo on the print.

If you turn off the "Use a single layout" option, then you will be able to create different branding for vertical and horizontal photos. The sheet size above will define the sheet for vertical and square photos, and for horizontal photos will use the same size but rotated 90 degrees.

Graphics are added by adding image layers.

If the option "Background" is turned off, the image is overlaid on top of the photo.

When the option "Background" is on, the photo is displayed in areas not taken by the photo and instead of the remote chromakey.

You can upload a test photo to customize branding.

Moving the current layer is done with the left mouse button, or by changing the values of the "X", "Y" fields.

You can scale the current layer using the mouse wheel.

It is also possible to add QR codes, link, password and pin code of the Internet gallery to the photo. It is recommended to turn off the display of QR codes in galleries so that they do not duplicate those overlaid on photos.

Attention! Local links do not work outside of the current local network. Use QR code printing with these links only when you really need to.

You can set the background color of the printout outside the photo.

“Do not brand” - Preset not applied.

“Used for printouts only” - Only the printout is branded.

“Used for printouts and for previews in galleries” - Both the printout and the photo in the gallery are branded. The branded preview and the original photo are displayed.

“Used for printouts and for previews and photos in galleries” - Both the printout and the photo in the gallery are branded. A branded preview and a branded photo are displayed.

Attention! Processing is performed at the time of uploading a photo to the gallery. A preset must be created before uploading photos!

The “Width” and “Height” fields of the “Size” block are used to set the size of the generated image.

In the “Photo size” block, the position of the processed photo on the generated image is specified. If the aspect ratio of the original photo does not coincide with the specified, then it either fits into the specified dimensions or is cropped, depending on the value of the "Crop" option.

If the aspect ratio of the photo does not match the specified one, then it will be aligned in accordance with the specified settings.

The background of the generated image outside the original photo is filled with the color specified in the "Background fill" option.

Moving the photo is done with the left mouse button with the Shift key pressed, or by changing the values of the "Left (mm)", "Top (mm)" fields.

You can scale the photo using the mouse wheel with the Shift key pressed, or by changing the values of the "Width (mm)", "Height (mm)" fields.

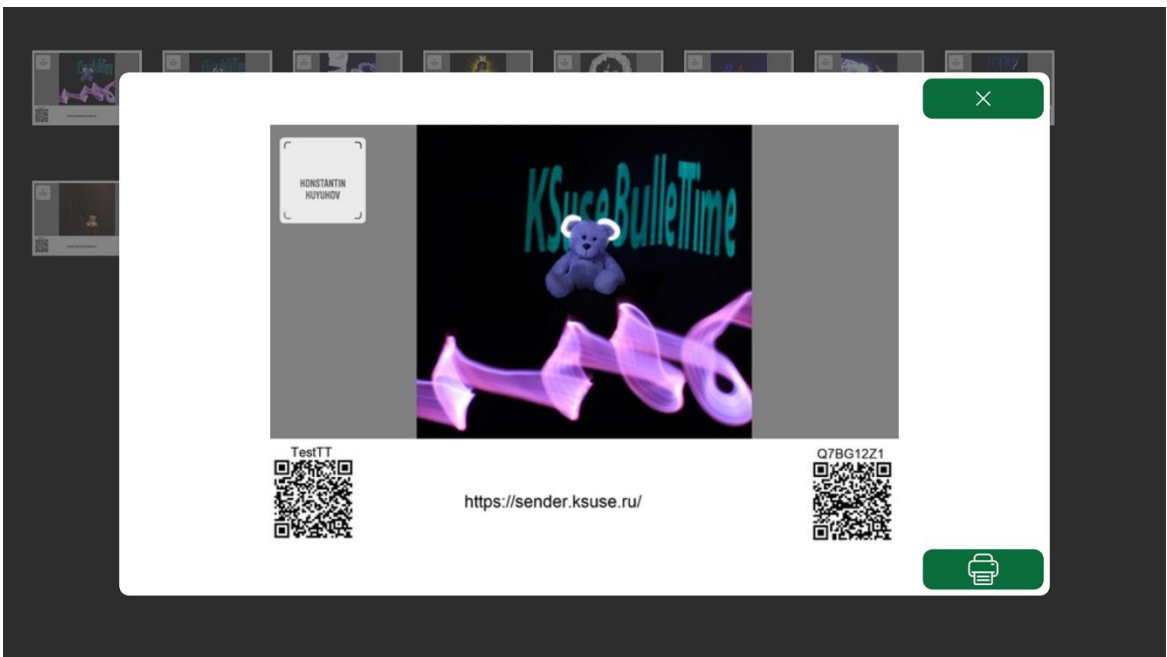
"Chromakey" tab

There are two ways to remove a uniform background from photos:

1. Enable the option "Delete chromakey", set the color of the chromakey, set the threshold.
2. Enable the option "Delete background". In this case, the color of a uniform background will be determined automatically. The selected threshold will also be applied for deletion. Attention! The predominant color in the photograph may not only be in the background.

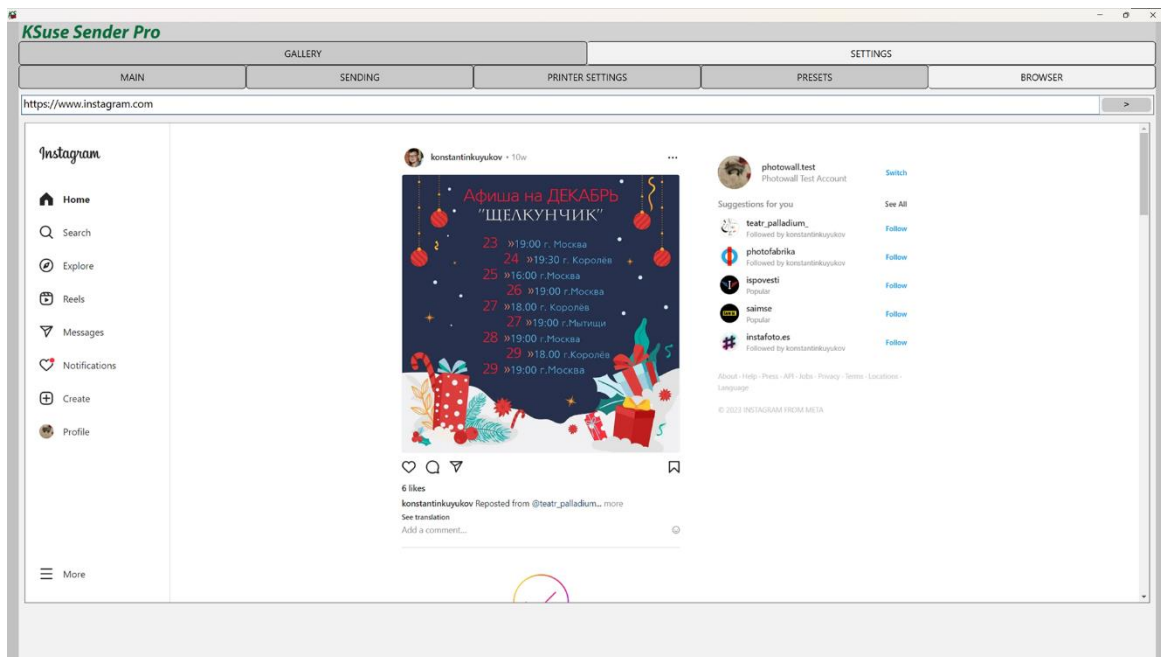
Using the eyedropper, you can take color from the test image.

Second screen



It is possible to send photos from this gallery for printing.

Browser



This tab contains a built-in Chromium-based browser. It serves for authorization, confirmation and unblocking on Instagram *.

* The activities of the Meta corporation, as well as its Facebook and Instagram platforms, are recognized as extremist and banned in the Russian Federation

Web API

The program contains a built-in web server.

Launching commands and obtaining information by a web page is carried out by opening virtual pages and files located in the www folder.

You can change these files as you see fit. When updating or reinstalling the software, the pages are replaced with those in the distribution kit.

List of virtual pages:

1. /c – loads the c.html file, replacing {ShowControls} with "controls" or "", depending on the settings of the active preset.
2. /last – loads the last.html file, replacing {ShowControls} with "controls" or "".
3. index.html – loads the index.html file

Replacements in the text:

- a. {CaptionGuestId} – Name of the ID field
- b. {showGuestId} – Required Field, "required" or ""
- c. {CaptionGuestName} – Name of the Name field
- d. {showGuestName} - "required" or ""
- e. {CaptionGuestSurname} – Name of the Surname field
- f. {showGuestSurname} - "required" or ""
- g. {CaptionGuestCaption} – Name of the Caption field
- h. {showGuestCaption} - "required" or ""
- i. {showAgree} – Display an agreement on the processing of personal data, "" or "hidden"
- j. {TextAgree} – The text of the agreement on the processing of personal data, a short text of the agreement with a link to the full text of the agreement or ""

- k. {checkAgree} – Is there consent by default for the processing of personal data, "checked" or ""
 - l. {showUseConsent} - "" or "hidden"
 - m. {TextUseConsent} – Text of consent to use materials or ""
 - n. {checkUseConsent} - Is there a default consent for the use of materials, "checked" or ""
 - o. {autocomplete} – Whether autocomplete is enabled, "off" or "on"
 - p. {emailFieldType} - type="email" multiple or type="text"
 - q. {CaptionEmail} – "Email" value from dictionary or "" if there are no other fields in the form
 - r. {showPrint} – Show print button, "" or "hidden"
 - s. {showHide} – Show hide button, "" or "hidden"
 - t. {TheNumberOfCopies} – Selector of number of copies or ""
 - u. {showSave} – Show save button, "" or "hidden"
 - v. {WebSize} is replaced with the preview size code in the gallery
 - w. {Theme} is replaced with the current theme code
 - x. {BTsend} - "SEND" value from dictionary
 - y. {BTprint} - "PRINT" value from dictionary
4. "/js/KSuse_mosaic.js" и "/js/KSuse_slider.js" loads the corresponding file

Replacements in the text:

- a. {ClearEmail} – Clear email input field, true or false
- b. {AgreeDefault} – Is there a default consent to the processing of personal data, true or false
- c. {AgreeUseConsentDefault} – Is there a default consent to use the content, true or false

- d. {UseRotateByEXIF} – Auto rotation of photos using EXIF data, true or false
 - e. {WebShowGalleryQR} – Display QR code of gallery, true or false
 - f. {WebShowPinQR} – Display QR code of the file, true or false
 - g. {WebPublic} – Whether the gallery is public, true or false
 - h. {WebPublicWithPass} – Whether the gallery has a password, true or false
 - i. {WebAccessPass} – Gallery password
 - j. {WebURL} - Gallery URL
 - k. {WebEmailSubject} – Email subject
 - l. {WebEmailText} – Email text
5. /showAgreement.html loads the showAgreement.html file, replacing {Text} with a full text of the Personal Data Agreement.
6. /ext.html – Runs the external program specified in the active preset.
- It is recommended to add an additional parameter to the query string, for example, &a=1
- a. In the GET parameter “params”, you can specify the parameters for launching the program, separated by commas. For example, “/ext.html?params=create,file” will run “blablabla.exe create file”
 - b. In the GET parameter “wait”:
 - i. 1 – Wait for the end of the program execution. In this case, loading of the page stops before the end of execution. The Html response will contain the program console output, or Error + the text of the returned error.
 - ii. 0 – Start without waiting for completion. Either “Launched” or Error + startup error text.
7. /getLT.html – Duration of displaying the file in the gallery
8. /getRep.html – Number of video repetitions in the carousel
9. /getListOfNames.html – List of files in the gallery in JSON format.

Structure: {"ID": identifier, "Ext": file extension, "Filename": file name without extension, "Pin": file pin code}

10. /getLastName.html – Last file in gallery in JSON format
11. /getListOfMailDomains.html – list of mail domains for hints separated by via;
12. /send.html – Adds the file to the send queue. GET parameters:
 - a. email - list of recipients separated by ;
 - b. curSlides - list of file identifiers separated by ;
 - c. agree – is there consent to the processing of personal data, 1 or 0
 - d. agreeUseConsent – is there consent to use the materials, 1 or 0
 - e. GuestId – Value of the Id field
 - f. GuestName – Value of the Name field
 - g. GuestSurname – Value of the Surname field
 - h. GuestCaption – Value of the Caption field

Ответ: Фраза из словаря "Added to the send queue".

13. /print.html - Добавляет файл в очередь на печать. GET параметры:
 - a. curSlide – Идентификатор текущего выбранного файла
 - b. kolvo – количество копий

Ответ: A phrase "Added to the send queue" from the dictionary.

14. /Prew.jpg?ID=x – File preview.
15. /GIF/ID.gif
16. /Photo/ ID.jpg, /Photo/ ID.png
17. /Video/ ID.wmv, /Video/ ID.mov

Used libraries

Icons made by Freepik from www.flaticon.com is licensed by CC 3.0 BY

<https://www.freepik.com/>

Icons made by Vitaly Gorbachev from www.flaticon.com is licensed by CC 3.0 BY

<https://www.flaticon.com/authors/vitaly-gorbachev>

Icons made by Pixel perfect from www.flaticon.com is licensed by CC 3.0 BY

<https://www.flaticon.com/authors/pixel-perfect>

Icons made by Smashicons from www.flaticon.com is licensed by CC 3.0 BY

<https://www.flaticon.com/authors/smashicons>

<http://creativecommons.org/licenses/by/3.0/>

System.Data.SQLite - <https://system.data.sqlite.org>

Microsoft - <https://dotnet.microsoft.com/>

CefSharp - <https://github.com/cefsharp/cefsharp>

BSD 3-Clause License:

NLog - <https://nlog-project.org/>

The MIT License:

DynamicExpresso.Core - <https://github.com/davideicardi/DynamicExpresso>

HelixToolkit - <https://github.com/helix-toolkit/helix-toolkit>

Newtonsoft.Json - <https://www.newtonsoft.com/json>

Portable.BouncyCastle - <https://www.bouncycastle.org/csharp/>

QRCoder - <https://github.com/codebude/QRCoder/>

SendGrid - <https://sendgrid.com/>

SharpZipLib - <https://github.com/icsharpcode/SharpZipLib>

QRCode.js - <https://github.com/davidshimjs/qrcodejs>

jQuery - <https://jquery.com/>

JavaScript-Load-Image - <https://github.com/blueimp/JavaScript-Load-Image>

vanilla-lazyload - <https://github.com/verlok/vanilla-lazyload>

twilio-csharp - <https://github.com/twilio/twilio-csharp>

dropbox-sdk-dotnet - <https://github.com/dropbox/dropbox-sdk-dotnet>

VkNet - <https://vknet.github.io/vk/>

Flurl - <https://flurl.dev/>

MimeTypesMap - <https://github.com/hey-red/MimeTypesMap>

CefSharp.Dom - <https://github.com/cefsharp/CefSharp.Dom>

Apache License:

CalcBinding - <https://github.com/Alex141/CalcBinding>

Google.Apis.Drive.v3 - <https://github.com/googleapis/google-api-dotnet-client>

Magick.NET - <https://github.com/dlemstra/Magick.NET>

NPOI - <https://github.com/tonyqus/npoi>

YandexDisk.Client - <https://github.com/raidenyn/yandexdisk.client>

Microsoft Public License (MS-PL):

Extended.Wpf.Toolkit - <https://github.com/xceedsoftware/wpftoolkit>

NAudio - <https://github.com/naudio/NAudio>

FFME - <https://github.com/unosquare/ffmpegelement>

LGPL v3:

FFMPEG - <https://www.ffmpeg.org/>